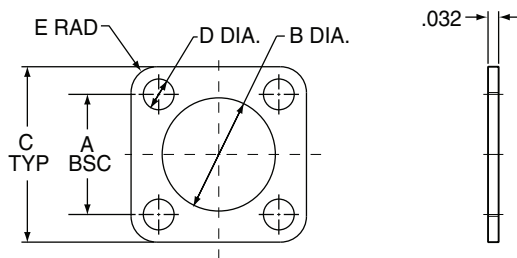


SQUARE FLANGED GASKETS



SHELL SIZE	PART NUMBER			A BSC.		B DIA.		C TYP.		D DIA.		E RAD.	
	FLUOROSILICONE	VITON®	CONDUCTIVE	IN.	MM.	IN.	MM.	IN.	MM.	IN.	MM.	IN.	MM.
5	2M809-108F11	2M809-108V11	2M809-108X11	0.363	9.22	0.342	8.69	0.530	13.46	0.093	2.36	0.078	1.98
6	2M809-108F12	2M809-108V12	2M809-108X12	0.423	10.74	0.405	10.29	0.590	14.99	0.093	2.36	0.078	1.98
7	2M809-108F13	2M809-108V13	2M809-108X13	0.483	12.27	0.467	11.86	0.650	16.51	0.093	2.36	0.078	1.98
8	2M809-108F14	2M809-108V14	2M809-108X14	0.542	13.84	0.530	13.46	0.712	18.08	0.093	2.36	0.078	1.98
9	2M809-108F15	2M809-108V15	2M809-108X15	0.719	17.02	0.655	16.64	0.890	22.61	0.125	3.18	0.105	2.67
10	2M809-108F16	2M809-108V16	2M809-108X16	0.719	17.02	0.655	16.64	0.890	22.61	0.125	3.18	0.105	2.67
13	2M809-108F17	2M809-108V17	2M809-108X17	0.812	20.62	0.842	21.39	1.030	26.16	0.125	3.18	0.105	2.67
16	2M809-108F18	2M809-108V18	2M809-108X18	0.981	24.92	1.030	26.16	1.219	30.96	0.125	3.18	0.105	2.67
17	2M809-108F19	2M809-108V19	2M809-108X19	1.060	26.92	1.092	27.74	1.280	32.51	0.125	3.18	0.105	2.67
21	2M809-108F43	2M809-108V43	2M809-108X43	1.322	33.58	1.332	33.83	1.570	39.88	0.125	3.18	0.105	2.67

SHRINK BOOTS FOR INTEGRAL ENDBELL

High Performance Elastomer

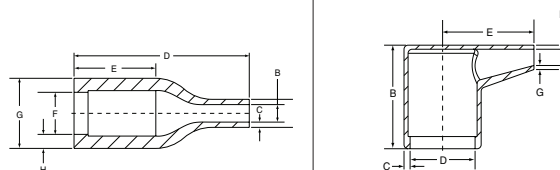
Pre-Coated with high-temperature adhesive

- Operating temperature -94 F to +302 F (-70 C to +150 C)
- Rated for 3000 hours of continuous operation at +302 F (+150 C)
- Excellent resistance to fuels, oils, and solvents
- Spec VG95343 Part 6

Zero-Halogen

Low-Smoke, Zero-Halogen Toxicity Requirements

- Meets U.S. and E.U. standards
- Pre-coated with high-temperature adhesive
- Operating temperature -22 F to +257 F (-30 C to +125 C)
- Good resistance to fuels, oils, and solvents
- Spec NAVSEA 5617649



BOOT SIZE	SHELL SIZE	HIGH-PERFORMANCE ELASTOMER		ZERO-HALOGEN		STRAIGHT BOOT CABLE RANGE		MIN.		RIGHT ANGLE BOOT CABLE RANGE		MIN.	
		STRAIGHT	RIGHT ANGLE	STRAIGHT	RIGHT ANGLE	MAX.		MIN.		MAX.		MIN.	
						IN.	MM.	IN.	MM.	IN.	MM.	IN.	MM.
1	5	2M809S060-1	2M809A060-1	2M809S060-1H	2M809A060-1H *	0.350	9.0	0.080	2.0	0.240	6.0	0.080	2.0
2	6, 7	2M809S060-2	2M809A060-2	2M809S060-2H	2M809A060-2H	0.650	16.5	0.150	3.8	0.650	16.5	0.100	2.5
3	8, 9	2M809S060-3	2M809A060-3	2M809S060-3H	2M809A060-3H	0.920	23.4	0.220	5.6	0.920	23.3	0.220	5.6
4	10, 13	2M809S060-4	2M809A060-4	2M809S060-4H	2M809A060-4H	1.120	28.4	0.260	6.6	1.120	28.5	0.250	6.3
5	16, 17	2M809S060-5	2M809A060-5	2M809S060-5H	2M809A060-5H	1.220	31.0	0.280	7.1	1.220	30.9	0.280	7.1
6	21	2M809S060-6	2M809A060-6	2M809S060-6H	2M809A060-6H	1.680	42.7	0.390	9.9	1.680	42.6	0.380	9.7

\* Size 1 Zero-halogen right-angle supplied less lip, see graphic

DUSTCAPS



SHELL SIZE FOR 2M801	METAL DUSTCAPS WITH NYLON ROPE LANYARD		
	FOR PLUGS WITH RING ATTACHMENT	FOR FLANGED RECEPTACLES WITH RING ATTACHMENT	FOR JAM NUT RECEPTACLES WITH LARGE RING ATTACHMENT
5	2M667-217-XX-G502-4	2M667-218-XX-G501-3	2M667-218-XX-G514-4
6	2M667-217-XX-G602-4	2M667-218-XX-G601-3	2M667-218-XX-G615-4
7	2M667-217-XX-G702-4	2M667-218-XX-G701-3	2M667-218-XX-G716-4
8	2M667-217-XX-G802-4	2M667-218-XX-G801-3	2M667-218-XX-G816-4
9	2M667-217-XX-G902-4	2M667-218-XX-G902-3	2M667-218-XX-G917-4
10	2M667-217-XX-G1002-5	2M667-218-XX-G1002-3	2M667-218-XX-G1018-4
13	2M667-217-XX-G1302-5	2M667-218-XX-G1302-3	2M667-218-XX-G1319-4
16	2M667-217-XX-G1602-6	2M667-218-XX-G1602-3	2M667-218-XX-G1620-4
17	2M667-217-XX-G1702-6	2M667-218-XX-G1702-3	2M667-218-XX-G1721-4
21	2M667-217-XX-G2102-6	2M667-218-XX-G2102-3	2M667-218-XX-G1724-4

- C** Aluminum/ Black Anodize (Non-Conductive) (RoHS)
- M** Aluminum/ Electroless Nickel (RoHS)
- NF** Aluminum/ Cadmium with Olive Drab Chromate
- MT** Aluminum/ Nickel-PTFE (Duralon) (RoHS)

- Z1** Stainless Steel/ Passivated
  - ZM** Stainless Steel/ Electroless Nickel (RoHS)
  - ZN** Aluminum/ Zinc-Nickel with Olive Drab Chromate
  - ZNU** Aluminum/ Zinc-Nickel with Black Chromate (RoHS)
- REPLACE XX WITH PLATING CODE**

STRAIN RELIEF CABLE CLAMP WITH ROTATABLE COUPLING

SHELL SIZE	PART NUMBER	THREAD SIZE 2B	CABLE ENTRY DIA.
5	2M620MS065-XX05	.2500-32 UNEF	0.11
6	2M620MS065-XX06	.3125-32 UNEF	0.17
7	2M620MS065-XX07	.4375-28 UNEF	0.23
8	2M620MS065-XX08	.5000-28 UNEF	0.30
9	2M620MS065-XX09	.5625-24 UNEF	0.30
10	2M620MS065-XX10	.6250-24 UNEF	0.36
13	2M620MS065-XX12	.6875-24 UNEF	0.42
16	2M620MS065-XX14	.9375-20 UNEF	0.48
17	2M620MS065-XX15	.9375-20 UNEF	0.61
21	2M620MS065-XX17	1.1875-18 UNEF	0.86

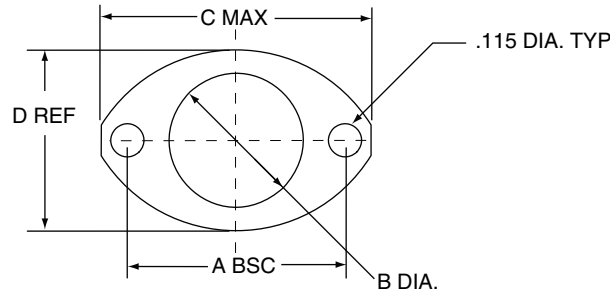
- C** Aluminum/ Black Anodize (Non-Conductive) (RoHS)
- M** Aluminum/ Electroless Nickel (RoHS)
- NF** Aluminum/ Cadmium with Olive Drab Chromate
- MT** Aluminum/ Nickel-PTFE (Duralon) (RoHS)
- Z1** Stainless Steel/ Passivated
- ZM** Stainless Steel/ Electroless Nickel (RoHS)
- ZN** Aluminum/ Zinc-Nickel with Olive Drab Chromate
- ZNU** Aluminum/ Zinc-Nickel with Black Chromate (RoHS)

**REPLACE XX WITH PLATING CODE**

ADDITIONAL BACKSHELLS

	DESCRIPTION	PART NUMBER PREFIX	STRAIGHT	90°	45°
	Thread-On BAND-IT Adapter	2M440MS135	X		
		2M440ML135		X	
		2M440MK135			X
	Low-Profile BAND-IT Adapter	2M440MS134	X		
	Environmental Backshell	2M370MS038	X		
		2M370MA038		X	
		2M370MB038			X
	EMI Backshell	2M380MS137	X		
		2M380MA137		X	
		2M380MB137			X
	Environmental EMI Backshell	2M390MS077	X		
		2M390MA077		X	
		2M390MB077			X

2 HOLE FLANGED GASKETS



SHELL SIZE	PART NUMBER			A BSC.		B DIA.		C TYP.		D DIA.	
	FLUOROSILICONE	VITON®	CONDUCTIVE	IN.	MM.	IN.	MM.	IN.	MM.	IN.	MM.
5	2M809-108F31	2M809-108V31	2M809-108X31	0.513	13.03	0.345	8.00	0.710	18.03	0.460	11.68
6	2M809-108F32	2M809-108V32	2M809-108X32	0.598	15.19	0.405	10.29	0.795	20.19	0.522	13.26
7	2M809-108F33	2M809-108V33	2M809-108X33	0.708	17.98	0.475	12.07	0.900	22.86	0.590	14.99
8	2M809-108F34	2M809-108V34	2M809-108X34	0.964	24.51	0.545	13.84	1.160	29.46	0.670	17.02
9	2M809-108F35	2M809-108V35	2M809-108X35	1.017	25.83	0.605	15.37	1.215	30.86	0.721	18.31
10	2M809-108F36	2M809-108V36	2M809-108X36	1.101	27.97	0.682	17.32	1.295	32.89	0.795	20.19
12	2M809-108F37	2M809-108V37	2M809-108X37	1.204	30.58	0.757	19.23	1.400	35.56	0.874	22.20
14	2M809-108F38	2M809-108V38	2M809-108X38	1.280	32.51	0.910	23.11	1.555	39.50	1.050	26.67
15	2M809-108F39	2M809-108V39	2M809-108X39	1.370	34.80	.970	24.64	1.640	41.66	1.150	29.21

SHRINK BOOTS FOR INTEGRAL ENDBELL

High-Performance Elastomer

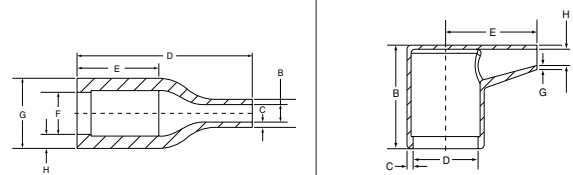
Pre-Coated with high-temperature adhesive

- Operating temperature -94 F to +302 F (-70 C to +150 C)
- Rated for 3000 hours of continuous operation at +302 F (+150 C)
- Excellent resistance to fuels, oils, and solvents
- Spec VG95343 Part 6

Zero-Halogen

Low-Smoke, Zero-Halogen Toxicity Requirements

- Meets U.S. and E.U. standards
- Pre-coated with high-temperature adhesive
- Operating temperature -22 F to +257 F (-30 C to +125 C)
- Good resistance to fuels, oils, and solvents
- Spec NAVSEA 5617649



BOOT SIZE	SHELL SIZE	HIGH-PERFORMANCE ELASTOMER		ZERO-HALOGEN		STRAIGHT BOOT CABLE RANGE		MIN.		RIGHT ANGLE BOOT CABLE RANGE		MIN.	
		STRAIGHT	RIGHT ANGLE	STRAIGHT	RIGHT ANGLE	MAX.	MIN.	MAX.	MIN.	MAX.	MIN.	MAX.	MIN.
1	5	2M809S060-1	2M809A060-1	2M809S060-1H	2M809A060-1H *	0.350	9.0	0.080	2.0	0.240	6.0	0.080	2.0
2	6, 7	2M809S060-2	2M809A060-2	2M809S060-2H	2M809A060-2H	0.650	16.5	0.150	3.8	0.650	16.5	0.100	2.5
3	8, 9	2M809S060-3	2M809A060-3	2M809S060-3H	2M809A060-3H	0.920	23.4	0.220	5.6	0.920	23.3	0.220	5.6
4	10, 12	2M809S060-4	2M809A060-4	2M809S060-4H	2M809A060-4H	1.120	28.4	0.260	6.6	1.120	28.5	0.250	6.3
5	14, 15	2M809S060-5	2M809A060-5	2M809S060-5H	2M809A060-5H	1.220	31.0	0.280	7.1	1.220	30.9	0.280	7.1

\* Size 1 zero-halogen right-angle supplied less lip, see graphic

DUSTCAPS



SHELL SIZE FOR 2M803	METAL DUSTCAPS WITH NYLON ROPE LANYARD		
	FOR PLUGS WITH RING ATTACHMENT	FOR FLANGED RECEPTACLES WITH RING ATTACHMENT	FOR JAM NUT RECEPTACLES WITH LARGE RING ATTACHMENT
5	2M660-082-XX-G502-4	2M660-083-XX-G501-3	2M660-083-XX-G514-4
6	2M660-082-XX-G602-4	2M660-083-XX-G601-3	2M660-083-XX-G615-4
7	2M660-082-XX-G702-4	2M660-083-XX-G701-3	2M660-083-XX-G716-4
8	2M660-082-XX-G802-4	2M660-083-XX-G801-3	2M660-083-XX-G817-4
9	2M660-082-XX-G902-4	2M660-083-XX-G902-3	2M660-083-XX-G918-4
10	2M660-082-XX-G1002-5	2M660-083-XX-G1002-3	2M660-083-XX-G1019-4
12	2M660-082-XX-G1202-5	2M660-083-XX-G1202-3	2M660-083-XX-G1219-4
14	2M660-082-XX-G1402-6	2M660-083-XX-G1402-3	2M660-083-XX-G1420-4
15	2M660-082-XX-G1602-6	2M660-083-XX-G1502-3	2M660-083-XX-G1520-4

- C** Aluminum/ Black Anodize (Non-Conductive) (RoHS)
- M** Aluminum/ Electroless Nickel (RoHS)
- NF** Aluminum/ Cadmium with Olive Drab Chromate
- MT** Aluminum/ Nickel-PTFE (Duralon) (RoHS)

- Z1** Stainless Steel/ Passivated
  - ZM** Stainless Steel/ Electroless Nickel (RoHS)
  - ZN** Aluminum/ Zinc-Nickel with Olive Drab Chromate
  - ZNU** Aluminum/ Zinc-Nickel with Black Chromate (RoHS)
- REPLACE XX WITH PLATING CODE**

STRAIN RELIEF CABLE CLAMP WITH ROTATABLE COUPLING

SHELL SIZE	PART NUMBER	THREAD SIZE 2B	CABLE ENTRY DIA.
5	2M620MS065-XX05	.2500-32 UNEF	0.11
6	2M620MS065-XX06	.3125-32 UNEF	0.17
7	2M620MS065-XX07	.4375-28 UNEF	0.23
8	2M620MS065-XX08	.5000-28 UNEF	0.30
9	2M620MS065-XX09	.5625-24 UNEF	0.30
10	2M620MS065-XX10	.6250-24 UNEF	0.36
12	2M620MS065-XX12	.6875-24 UNEF	0.42
14	2M620MS065-XX14	.9375-20 UNEF	0.48
15	2M620MS065-XX15	.9375-20 UNEF	0.61

- C** Aluminum/ Black Anodize (Non-Conductive) (RoHS)
  - M** Aluminum/ Electroless Nickel (RoHS)
  - NF** Aluminum/ Cadmium with Olive Drab Chromate
  - MT** Aluminum/ Nickel-PTFE (Duralon) (RoHS)
  - Z1** Stainless Steel/ Passivated
  - ZM** Stainless Steel/ Electroless Nickel (RoHS)
  - ZN** Aluminum/ Zinc-Nickel with Olive Drab Chromate
  - ZNU** Aluminum/ Zinc-Nickel with Black Chromate (RoHS)
- REPLACE XX WITH PLATING CODE**

ADDITIONAL BACKSHELLS

	DESCRIPTION	PART NUMBER PREFIX	STRAIGHT	90°	45°
	Thread-On BAND-IT Adapter	2M440MS135	X		
		2M440ML135		X	
		2M440MK135			X
	Low-Profile BAND-IT Adapter	2M440MS134	X		
	Environmental Backshell	2M370MS038	X		
		2M370MA038		X	
		2M370MB038			X
	EMI Backshell	2M380MS137	X		
		2M380MA137		X	
		2M380MB137			X
	Environmental EMI Backshell	2M390MS077	X		
		2M390MA077		X	
		2M390MB077			X

**SHRINK BOOTS FOR INTEGRAL ENDBELL**

**High Performance Elastomer**

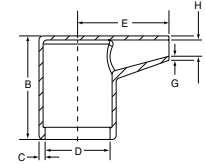
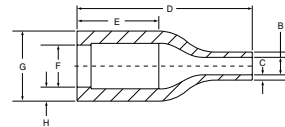
Pre-Coated with high-temperature adhesive

- Operating temperature -94 F to +302 F (-70 C to +150 C)
- Rated for 3000 hours of continuous operation at +302 F (+150 C)
- Excellent resistance to fuels, oils, and solvents
- Spec VG95343 Part 6

**Zero Halogen**

Low-Smoke, Zero-Halogen Toxicity Requirements

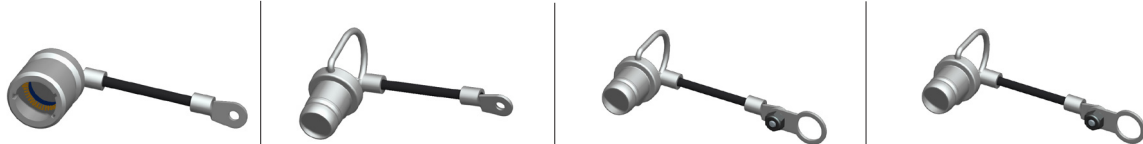
- Meets U.S. and E.U. standards
- Pre-coated with high-temperature adhesive
- Operating temperature -22 F to +257 F (-30 C to +125 C)
- Good resistance to fuels, oils, and solvents
- Spec NAVSEA 5617649



BOOT SIZE	SHELL SIZE	HIGH-PERFORMANCE ELASTOMER				ZERO-HALOGEN				STRAIGHT BOOT CABLE RANGE		RIGHT ANGLE BOOT CABLE RANGE	
		STRAIGHT		RIGHT ANGLE		STRAIGHT		RIGHT ANGLE		MAX.		MIN.	
		IN.	MM.	IN.	MM.	IN.	MM.	IN.	MM.	IN.	MM.	IN.	MM.
1	5	2M809S060-1	2M809A060-1	2M809S060-1H	2M809A060-1H *	0.350	9.0	0.080	2.0	0.240	6.0	0.080	2.0
2	6, 7	2M809S060-2	2M809A060-2	2M809S060-2H	2M809A060-2H	0.650	16.5	0.150	3.8	0.650	16.5	0.100	2.5
3	8, 9	2M809S060-3	2M809A060-3	2M809S060-3H	2M809A060-3H	0.920	23.4	0.220	5.6	0.920	23.3	0.220	5.6
4	10, 12	2M809S060-4	2M809A060-4	2M809S060-4H	2M809A060-4H	1.120	28.4	0.260	6.6	1.120	28.5	0.250	6.3
5	14	2M809S060-5	2M809A060-5	2M809S060-5H	2M809A060-5H	1.220	31.0	0.280	7.1	1.220	30.9	0.280	7.1

\* Size 1 Zero-halogen right-angle supplied less lip, see graphic

**METAL DUSTCAPS**



SHELL SIZE FOR 2M804	METAL DUSTCAPS WITH NYLON ROPE LANYARD			
	FOR PLUGS WITH RING ATTACHMENT	FOR FLANGED RECEPTACLES WITH RING ATTACHMENT	FOR JAM NUT RECEPTACLES REAR MOUNT WITH LARGE RING ATTACHMENT	FOR JAM NUT RECEPTACLES FRONT MOUNT WITH LARGE RING ATTACHMENT
5	2M809-198-XX5-G02-4	2M667-202-XX5-G01-3R	2M667-202-XX5-G14-4R	2M667-202-XX5-G16-4R
6	2M809-198-XX6-G02-4	2M667-202-XX6-G01-3R	2M667-202-XX6-G15-4R	2M667-202-XX6-G16-4R
7	2M809-198-XX7-G02-4	2M667-202-XX7-G01-3R	2M667-202-XX7-G16-4R	2M667-202-XX7-G18-4R
8	2M809-198-XX8-G02-4	2M667-202-XX8-G01-3R	2M667-202-XX8-G16-4R	2M667-202-XX8-G18-4R
9	2M809-198-XX9-G02-4	2M667-202-XX9-G02-3R	2M667-202-XX9-G17-4R	2M667-202-XX9-G19-4R
10	2M809-198-XX10-G02-5	2M667-202-XX10-G02-3R	2M667-202-XX10-G18-4R	2M667-202-XX10-G19-4R
12	2M809-198-XX12-G02-5	2M667-202-XX12-G02-3R	2M667-202-XX12-G19-4R	2M667-202-XX12-G20-4R
14	2M809-198-XX14-G02-6	2M667-202-XX14-G02-3R	2M667-202-XX14-G20-4R	2M667-202-XX14-G20-4R

- C** Aluminum/ Black Anodize (Non-Conductive) (RoHS)
- M** Aluminum/ Electroless Nickel (RoHS)
- NF** Aluminum/ Cadmium with Olive Drab Chromate
- MT** Aluminum/ Nickel-PTFE (Duralon) (RoHS)

- Z1** Stainless Steel/ Passivated
- ZM** Stainless Steel/ Electroless Nickel (RoHS)
- ZN** Aluminum/ Zinc-Nickel with Olive Drab Chromate
- ZNU** Aluminum/ Zinc-Nickel with Black Chromate (RoHS)

**REPLACE XX WITH PLATING CODE**

## RUBBER DUSTCAPS



SHELL SIZE FOR 2M804	RUBBER NON-CONDUCTIVE DUSTCAPS WITH NYLON ROPE LANYARD		
	FOR PLUG WITH RING ATTACHMENT	FOR FLANGED RECEPTACLE WITH RING ATTACHEMENT	FOR JAM NUT RECEPTACLES FRONT MOUNT WITH LARGE RING ATTACHMENT
5	2M809-083-5G4-02	2M809-087-5G4-15	2M809-087-5G4-08
6	2M809-083-6G4-02	2M809-087-6G4-08	2M809-087-6G4-16
7	2M809-083-7G4-02	2M809-087-7G4-17	2M809-087-7G4-18
8	2M809-083-8G4-02	2M809-087-8G4-17	2M809-087-8G4-18
9	2M809-083-9G4-02	2M809-087-9G4-18	2M809-087-9G4-10
10	2M809-083-10G5-02	2M809-087-10G4-10	2M809-087-10G4-25
12	2M809-083-12G5-02	2M809-087-12G4-19	2M809-087-12G4-12
14	2M809-083-14G6-02	2M809-087-14G4-12	2M809-087-14G4-20

## STRAIN RELIEF CABLE CLAMP WITH ROTATABLE COUPLING

SHELL SIZE	PART NUMBER	THREAD SIZE 2B	CABLE ENTRY DIA.
5	2M620MS065-XX05	.2500-32 UNEF	0.11
6	2M620MS065-XX06	.3125-32 UNEF	0.17
7	2M620MS065-XX07	.4375-28 UNEF	0.23
8	2M620MS065-XX08	.5000-28 UNEF	0.30
9	2M620MS065-XX09	.5625-24 UNEF	0.30
10	2M620MS065-XX10	.6250-24 UNEF	0.36
12	2M620MS065-XX12	.6875-24 UNEF	0.42
14	2M620MS065-XX14	.9375-20 UNEF	0.48

**C** Aluminum/ Black Anodize (Non-Conductive) (RoHS)

**M** Aluminum/ Electroless Nickel (RoHS)

**NF** Aluminum/ Cadmium with Olive Drab Chromate

**MT** Aluminum/ Nickel-PTFE (Duralon) (RoHS)

**Z1** Stainless Steel/ Passivated

**ZM** Stainless Steel/ Electroless Nickel (RoHS)

**ZN** Aluminum/ Zinc-Nickel with Olive Drab Chromate

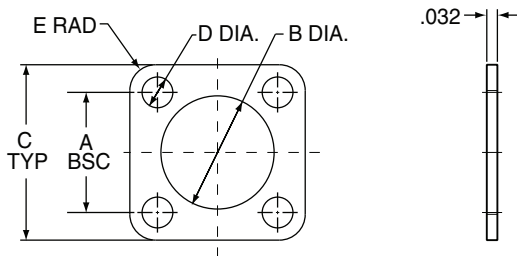
**ZNU** Aluminum/ Zinc-Nickel with Black Chromate (RoHS)

REPLACE **XX** WITH PLATING CODE

## ADDITIONAL BACKSHELLS

	DESCRIPTION	PART NUMBER PREFIX	STRAIGHT	90°	45°
	Thread-On BAND-IT Adapter	2M440MS135	X		
		2M440ML135		X	
		2M440MK135			X
	Low-Profile BAND-IT Adapter	2M440MS134	X		
	Environmental Backshell	2M370MS038	X		
		2M370MA038		X	
		2M370MB038			X
	EMI Backshell	2M380MS137	X		
		2M380MA137		X	
		2M380MB137			X
	Environmental EMI Backshell	2M390MS077	X		
		2M390MA077		X	
		2M390MB077			X

SQUARE FLANGED GASKETS



SHELL SIZE	PART NUMBER			A BSC.		B DIA.		C TYP.		D DIA.		E RAD.	
	FLUOROSILICONE	VITON®	CONDUCTIVE	IN.	MM.	IN.	MM.	IN.	MM.	IN.	MM.	IN.	MM.
8	2M809-108F20	2M809-108V20	2M809-108X20	.660	16.76	.530	13.46	.850	21.46	.093	2.36	.078	1.98
9	2M809-108F21	2M809-108V21	2M809-108X21	.723	18.36	.590	14.99	.913	23.19	.093	2.36	.078	1.98
10	2M809-108F22	2M809-108V22	2M809-108X22	.785	19.94	.660	16.76	.975	24.77	.093	2.36	.078	1.98
11	2M809-108F23	2M809-108V23	2M809-108X23	.848	21.54	.720	18.29	1.039	26.39	.093	2.36	.078	1.98
12	2M809-108F24	2M809-108V24	2M809-108X24	.909	23.09	.780	19.81	1.099	27.91	.093	2.36	.078	1.98
15	2M809-108F25	2M809-108V25	2M809-108X25	1.058	26.87	.970	24.64	1.288	32.72	.125	3.18	.105	2.67
18	2M809-108F26	2M809-108V26	2M809-108X26	1.255	31.88	1.160	29.46	1.475	37.47	.125	3.18	.105	2.67
19	2M809-108F27	2M809-108V27	2M809-108X27	1.327	33.71	1.220	30.99	1.537	39.04	.125	3.18	.105	2.67
23	2M809-108F28	2M809-108V28	2M809-108X28	1.570	39.88	1.458	37.03	1.797	45.64	.125	3.18	.105	2.67

SHRINK BOOTS FOR INTEGRAL ENDBELL

High-Performance Elastomer

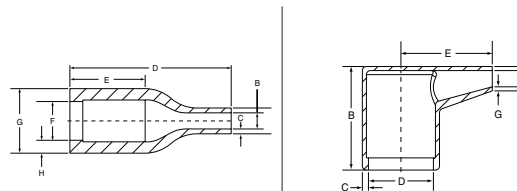
Pre-Coated with High-Temperature Adhesive

- Operating temperature -94 F to +302 F (-70 C to +150 C)
- Rated for 3000 hours of continuous operation at +302 F (+150 C)
- Excellent resistance to fuels, oils, and solvents
- Spec VG95343 Part 6

Zero-Halogen

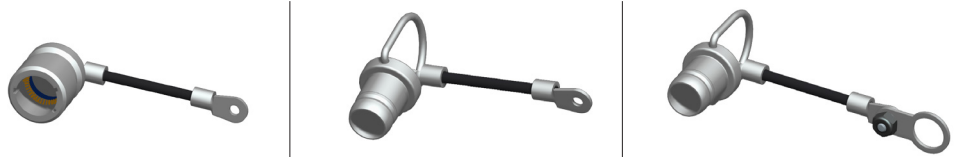
Low-Smoke, Zero-Halogen Toxicity Requirements

- Meets U.S. and E.U. standards
- Pre-coated with high-temperature adhesive
- Operating temperature -22 F to +257 F (-30 C to +125 C)
- Good resistance to fuels, oils, and solvents
- Spec NAVSEA 5617649



BOOT SIZE	SHELL SIZE	HIGH-PERFORMANCE ELASTOMER		ZERO-HALOGEN		STRAIGHT BOOT CABLE RANGE		MIN.		RIGHT ANGLE BOOT CABLE RANGE		MIN.	
		STRAIGHT	RIGHT ANGLE	STRAIGHT	RIGHT ANGLE	MAX.	MIN.	MAX.	MIN.	MAX.	MIN.	MAX.	MIN.
2	8, 9	2M809S060-2	2M809A060-2	2M809S060-2H	2M809A060-2H	0.650	16.5	0.150	3.8	0.650	16.5	0.100	2.5
3	10,11	2M809S060-3	2M809A060-3	2M809S060-3H	2M809A060-3H	0.920	23.4	0.220	5.6	0.920	23.3	0.220	5.6
4	12,15	2M809S060-4	2M809A060-4	2M809S060-4H	2M809A060-4H	1.120	28.4	0.260	6.6	1.120	28.5	0.250	6.3
5	18,19	2M809S060-5	2M809A060-5	2M809S060-5H	2M809A060-5H	1.220	31.0	0.280	7.1	1.220	30.9	0.280	7.1
6	23	2M809S060-6	2M809A060-6	2M809S060-6H	2M809A060-6H	1.680	42.7	0.390	9.9	1.680	42.7	0.380	9.7

DUSTCAPS



SHELL SIZE FOR 2M805	METAL DUSTCAPS WITH NYLON ROPE LANYARD		
	FOR PLUGS WITH RING ATTACHMENT	FOR FLANGED RECEPTACLES WITH RING ATTACHMENT	FOR JAM NUT RECEPTACLES WITH LARGE RING ATTACHMENT
8	2M667-261-XX-G0802-4	2M667-262-XX-G0801-4	2M667-262-XX-G0816-4
9	2M667-261-XX-G0902-4	2M667-262-XX-G0901-4	2M667-262-XX-G0918-4
10	2M667-261-XX-G1002-5	2M667-262-XX-G1001-5	2M667-262-XX-G1018-5
11	2M667-261-XX-G1102-5	2M667-262-XX-G1101-5	2M667-262-XX-G1119-5
12	2M667-261-XX-G1202-5	2M667-262-XX-G1201-5	2M667-262-XX-G1219-5
15	2M667-261-XX-G1502-6	2M667-262-XX-G1502-5	2M667-262-XX-G1520-5
18	2M667-261-XX-G1802-6	2M667-262-XX-G1802-5	2M667-262-XX-G1822-5
19	2M667-261-XX-G1902-6	2M667-262-XX-G1902-5	2M667-262-XX-G1923-5
23	2M667-261-XX-G2302-6	2M667-262-XX-G2302-5	2M667-262-XX-G2325-5

- C** Aluminum/ Black Anodize (Non-Conductive) (RoHS)
- M** Aluminum/ Electroless Nickel (RoHS)
- NF** Aluminum/ Cadmium with Olive Drab Chromate
- MT** Aluminum/ Nickel-PTFE (Duralon) (RoHS)

- Z1** Stainless Steel/ Passivated
  - ZN** Aluminum/ Zinc-Nickel with Olive Drab Chromate
  - ZM** Stainless Steel/ Electroless Nickel (RoHS)
  - ZNU** Aluminum/ Zinc-Nickel with Black Chromate (RoHS)
- REPLACE XX WITH PLATING CODE**

STRAIN RELIEF CABLE CLAMP WITH ROTATABLE COUPLING

SHELL SIZE	PART NUMBER	THREAD SIZE 2B	CABLE ENTRY DIA.
8	2M620MS065-XX11	.5625-28 UNEF	0.11
9	2M620MS065-XX07	.6875-28 UN	0.17
10	2M620MS065-XX08	.6875-28 UN	0.23
11	2M620MS065-XX09	.7500-28 UN	0.30
12	2M620MS065-XX10	.8125-28 UN	0.30
15	2M620MS065-XX13	1.000-28 UN	0.36
18	2M620MS065-XX14	1.1875-28 UN	0.48
19	2M620MS065-XX15	1.2500-28 UN	0.61
23	2M620MS065-XX17	1.5000-28 UN	0.86

- C** Aluminum/ Black Anodize (Non-Conductive) (RoHS)
  - M** Aluminum/ Electroless Nickel (RoHS)
  - NF** Aluminum/ Cadmium with Olive Drab Chromate
  - MT** Aluminum/ Nickel-PTFE (Duralon) (RoHS)
  - Z1** Stainless Steel/ Passivated
  - ZM** Stainless Steel/ Electroless Nickel (RoHS)
  - ZN** Aluminum/ Zinc-Nickel with Olive Drab Chromate
  - ZNU** Aluminum/ Zinc-Nickel with Black Chromate (RoHS)
- REPLACE XX WITH PLATING CODE**

ADDITIONAL BACKSHELLS

	DESCRIPTION	PART NUMBER PREFIX	STRAIGHT	90°	45°
	Thread-On BAND-IT Adapter	2M440MS135	X		
		2M440ML135		X	
		2M440MK135			X
	Low-Profile BAND-IT Adapter	2M440MS134	X		
	Environmental Backshell	2M370MS038	X		
		2M370MA038		X	
		2M370MB038			X
	EMI Backshell	2M380MS137	X		
		2M380MA137		X	
		2M380MB137			X
	Environmental EMI Backshell	2M390MS077	X		
		2M390MA077		X	
		2M390MB077			X