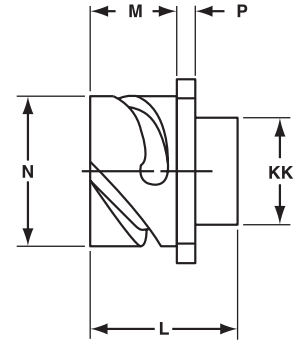
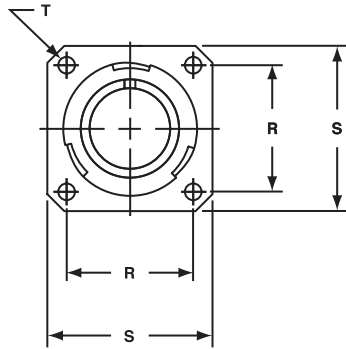
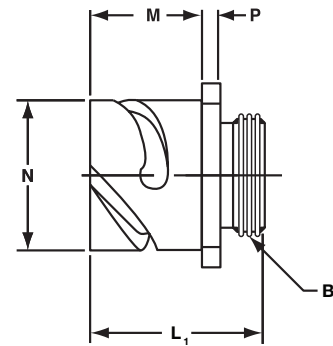
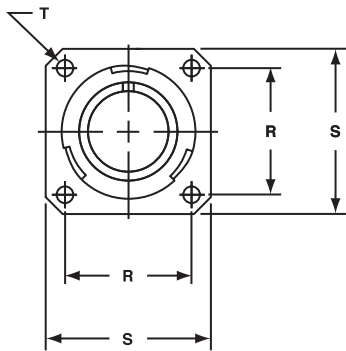


CB 2 STYLES



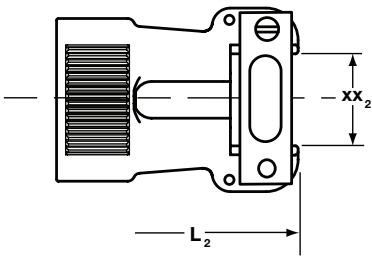
SHELL SIZE	M +.016(0.40)		N -.006(0.15)		P (MAX.)		R ±.004(0.10)		S +.016(0.40)		T		L ±.012(0.30)		KK (MAX.)	
	IN	MM	IN	MM	IN	MM	IN	MM	IN	MM	IN	MM	IN	MM	IN	MM
10SL	0.717	(18.2)	0.717	(18.2)	0.11	(2.8)	0.717	(18.2)	1	(25.4)	0.126	(3.2)	0.972	(24.7)	0.638	(16.2)
12S	0.717	(18.2)	0.843	(21.4)	0.126	(3.2)	0.811	(20.6)	1.102	(28.0)	0.126	(3.2)	0.972	(24.7)	0.638	(16.2)
14S	0.717	(18.2)	0.969	(24.6)	0.126	(3.2)	0.906	(23.0)	1.181	(30.0)	0.126	(3.2)	0.972	(24.7)	0.756	(19.2)
16S	0.717	(18.2)	1.079	(27.4)	0.126	(3.2)	0.969	(24.6)	1.280	(32.5)	0.126	(3.2)	0.972	(24.7)	0.882	(22.4)
16	0.846	(21.5)	1.079	(27.4)	0.126	(3.2)	0.969	(24.6)	1.280	(32.5)	0.126	(3.2)	1.331	(33.8)	0.882	(22.4)
18	0.907	(23.1)	1.213	(30.8)	0.157	(4.0)	1.063	(27.0)	1.378	(35.0)	0.126	(3.2)	1.331	(33.8)	1.008	(25.6)
20	0.907	(23.1)	1.346	(34.2)	0.157	(4.0)	1.157	(29.4)	1.496	(38.0)	0.126	(3.2)	1.331	(33.8)	1.142	(29.0)
22	0.907	(23.1)	1.472	(37.4)	0.157	(4.0)	1.252	(31.8)	1.614	(41.0)	0.126	(3.2)	1.331	(33.8)	1.268	(32.2)
24	0.907	(23.1)	1.610	(40.9)	0.157	(4.0)	1.374	(34.9)	1.752	(44.5)	0.146	(3.7)	1.331	(33.8)	1.390	(35.3)
28	0.947	(24.1)	1.839	(46.7)	0.157	(4.0)	1.563	(39.7)	2.000	(50.8)	0.146	(3.7)	1.331	(33.8)	1.630	(41.4)
32	0.947	(24.1)	2.102	(53.4)	0.157	(4.0)	1.752	(44.5)	2.244	(57.0)	0.169	(4.3)	1.331	(33.8)	1.882	(47.8)
36	0.947	(24.1)	2.346	(59.6)	0.157	(4.0)	1.937	(49.2)	2.500	(63.5)	0.169	(4.3)	1.331	(33.8)	2.071	(52.6)

CB 0 STYLES

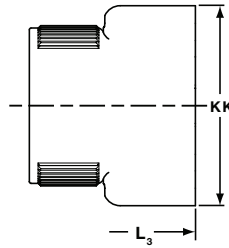


SHELL SIZE	M +.016(0.40)		N -.006(0.15)		P (MAX.)		R ±.006(0.10)		S ±.016(0.40)		T		L ₁ ±.012(.30)		B ₁ THREAD 2A
	IN	MM	IN	MM	IN	MM	IN	MM	IN	MM	IN	MM	IN	MM	
10SL	0.717	(18.2)	0.717	(18.2)	0.110	(2.8)	0.717	(18.2)	1.000	(25.4)	0.126	(3.2)	1.276	(32.4)	9/16-24UNEF
12S	0.717	(18.2)	0.843	(21.4)	0.126	(3.2)	0.811	(20.6)	1.102	(28.0)	0.126	(3.2)	1.276	(32.4)	5/8-24UNEF
14S	0.717	(18.2)	0.969	(24.6)	0.126	(3.2)	0.906	(23.0)	1.181	(30.0)	0.126	(3.2)	1.276	(32.4)	3/4-20UNEF
16S	0.717	(18.2)	1.079	(27.4)	0.126	(3.2)	0.969	(24.6)	1.280	(32.5)	0.126	(3.2)	1.276	(32.4)	7/8-20UNEF
16	0.907	(23.05)	1.079	(27.4)	0.126	(3.2)	0.969	(24.6)	1.280	(32.5)	0.126	(3.2)	1.575	(40.0)	7/8-20UNEF
18	0.907	(23.05)	1.213	(30.8)	0.157	(4.0)	1.063	(27.0)	1.378	(35.0)	0.126	(3.2)	1.634	(41.5)	1-20UNEF
20	0.907	(23.05)	1.346	(34.2)	0.157	(4.0)	1.157	(29.4)	1.496	(38.0)	0.126	(3.2)	1.634	(41.5)	1-1/8-18UNEF
22	0.907	(23.05)	1.472	(37.4)	0.157	(4.0)	1.252	(31.8)	1.614	(41.0)	0.126	(3.2)	1.634	(41.5)	1-1/4-18UNEF
24	0.907	(23.05)	1.610	(40.9)	0.157	(4.0)	1.374	(34.9)	1.752	(44.5)	0.146	(3.7)	1.634	(41.5)	1-3/8-18UNEF
28	0.947	(24.05)	1.839	(46.7)	0.157	(4.0)	1.563	(39.7)	2.000	(50.8)	0.146	(3.7)	1.673	(42.5)	1-5/8-18UNEF
32	0.947	(24.05)	2.102	(53.4)	0.157	(4.0)	1.752	(44.5)	2.244	(57.0)	0.169	(4.3)	1.673	(42.5)	1-7/8-16UN
36	0.947	(24.05)	2.346	(59.6)	0.157	(4.0)	1.937	(49.2)	2.500	(63.5)	0.169	(4.3)	1.673	(42.5)	2-1/8-16UN

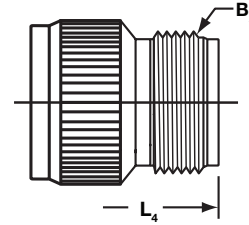
CB 0 ENDBELL STYLES



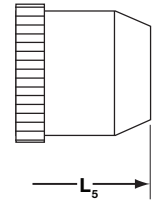
E



R

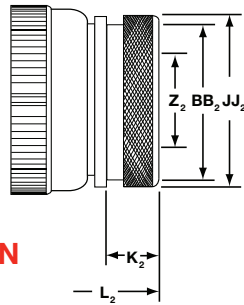


F

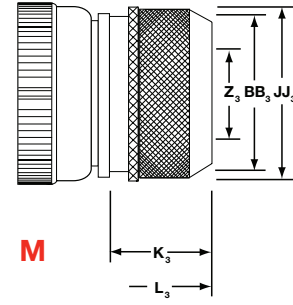


P

SHELL SIZE	L ₂ MAX		XX ₂ MAX		XX ₂ MIN		L ₃ MAX		KK		L ₄ MAX		B ₂ THREAD 2A	L ₅ MAX	
	IN	MM	IN	MM	IN	MM	IN	MM	IN	MM	IN	MM		IN	MM
10SL	2.244	(57.0)	0.256	(6.5)	0.140	(3.6)	1.969	(50.0)	0.378	(9.6)	2.047	(52.0)	5/8-24UNEF	1.531	(38.9)
12S	2.244	(57.0)	0.256	(6.5)	0.140	(3.6)	2.047	(52.0)	0.406	(10.3)	2.047	(52.0)	5/8-24UNEF	1.531	(38.9)
14S	2.323	(59.0)	0.354	(9.0)	0.195	(5.0)	2.047	(52.0)	0.488	(12.4)	2.047	(52.0)	3/4-20UNEF	1.531	(38.9)
16S	2.362	(60.0)	0.433	(11.0)	0.255	(6.5)	2.283	(58.0)	0.606	(15.4)	2.323	(59.0)	7/8-20UNEF	1.531	(38.9)
16	2.677	(68.0)	0.433	(11.0)	0.255	(6.5)	2.283	(58.0)	0.606	(15.4)	2.323	(59.0)	7/8-20UNEF	1.968	(50.0)
18	2.835	(72.0)	0.559	(14.2)	0.285	(7.2)	2.559	(65.0)	0.724	(18.4)	2.480	(63.0)	1-20UNEF	1.968	(50.0)
20	2.835	(72.0)	0.622	(15.8)	0.350	(8.9)	2.559	(65.0)	0.866	(22.0)	2.480	(63.0)	1-3/16-18UNEF	2.188	(55.6)
22	2.835	(72.0)	0.622	(15.8)	0.350	(8.9)	2.559	(65.0)	0.972	(24.7)	2.598	(66.0)	1-3/16-18UNEF	2.188	(55.6)
24	3.071	(78.0)	0.843	(21.4)	0.468	(11.9)	2.638	(67.0)	1.087	(27.6)	2.717	(69.0)	1-7/16-18UNEF	2.188	(55.6)
28	3.110	(79.0)	0.843	(21.4)	0.468	(11.9)	2.638	(67.0)	1.244	(31.6)	2.756	(70.0)	1-7/16-18UNEF	2.188	(55.6)
32	3.071	(78.0)	1.051	(26.7)	0.664	(16.9)	2.638	(67.0)	1.516	(38.5)	2.795	(71.0)	1-3/4-18NS	2.188	(55.6)
36	3.071	(78.0)	1.248	(31.7)	0.694	(17.6)	2.638	(67.0)	1.752	(44.5)	2.874	(73.0)	2-18NS	2.188	(55.6)



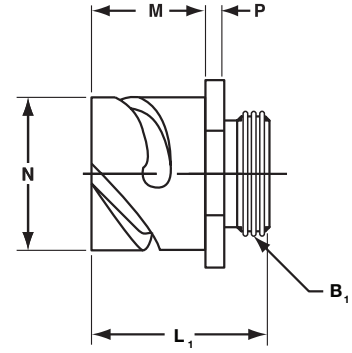
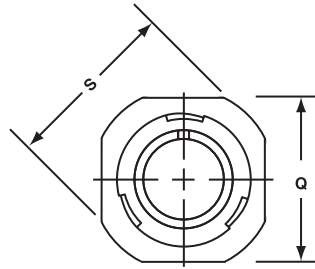
N



M

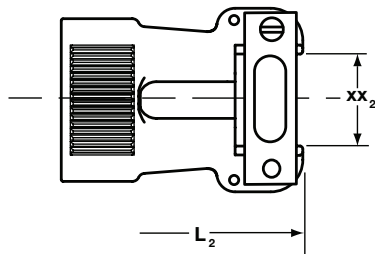
SHELL SIZE	L ₂ MAX		K ₂ MAX		Z ₂ MIN		BB ₂ MAX		JJ ₂ ±.008(0.20)		L ₃ MAX		K ₃ MAX		Z ₃ MIN		BB ₃ MAX		JJ ₃ ±.008(0.20)	
	IN	MM	IN	MM	IN	MM	IN	MM	IN	MM	IN	MM	IN	MM	IN	MM	IN	MM	IN	MM
10SL	2.244	(57.0)	0.461	(11.7)	0.303	(7.7)	0.524	(13.3)	0.610	(15.5)	2.165	(55.0)	0.669	(17.0)	0.303	(7.7)	0.642	(16.3)	0.728	(18.5)
12S	2.244	(57.0)	0.461	(11.7)	0.311	(7.9)	0.524	(13.3)	0.610	(15.5)	2.283	(58.0)	0.669	(17.0)	0.366	(9.3)	0.669	(17.0)	0.787	(20.0)
14S	2.244	(57.0)	0.461	(11.7)	0.417	(10.6)	0.669	(17.0)	0.752	(19.1)	2.283	(58.0)	0.669	(17.0)	0.417	(10.6)	0.787	(20.0)	0.866	(22.0)
16S	2.244	(57.0)	0.461	(11.7)	0.531	(13.5)	0.862	(21.9)	0.941	(23.9)	2.756	(70.0)	0.709	(18.0)	0.531	(13.5)	0.906	(23.0)	0.984	(25.0)
16	2.480	(63.0)	0.453	(11.5)	0.531	(13.5)	0.862	(21.9)	0.941	(23.9)	2.756	(70.0)	0.709	(18.0)	0.531	(13.5)	0.906	(23.0)	0.984	(25.0)
18	2.559	(65.0)	0.453	(11.5)	0.575	(14.6)	0.862	(21.9)	0.941	(23.9)	2.756	(70.0)	0.709	(18.0)	0.575	(14.6)	0.965	(24.5)	1.102	(28.0)
20	2.677	(68.0)	0.500	(12.7)	0.736	(18.7)	1.031	(26.2)	1.165	(29.6)	2.756	(70.0)	0.709	(18.0)	0.728	(18.5)	1.122	(28.5)	1.260	(32.0)
22	2.677	(68.0)	0.500	(12.7)	0.819	(20.8)	1.031	(26.2)	1.165	(29.6)	2.756	(70.0)	0.709	(18.0)	0.819	(20.8)	1.201	(30.5)	1.339	(34.0)
24	2.756	(70.0)	0.500	(12.7)	0.969	(24.6)	1.358	(34.5)	1.488	(37.8)	2.756	(70.0)	0.709	(18.0)	0.969	(24.6)	1.358	(34.5)	1.496	(38.0)
28	2.795	(71.0)	0.500	(12.7)	1.063	(27.0)	1.358	(34.5)	1.488	(37.8)	2.756	(70.0)	0.709	(18.0)	1.063	(27.0)	1.476	(37.5)	1.614	(41.0)
32	2.913	(74.0)	0.598	(15.2)	1.311	(33.3)	1.717	(43.6)	1.882	(47.8)	2.953	(75.0)	0.709	(18.0)	1.311	(33.3)	1.732	(44.0)	1.890	(48.0)
36	2.913	(74.0)	0.598	(15.2)	1.516	(38.5)	1.717	(43.6)	1.882	(47.8)	3.346	(85.0)	0.709	(18.0)	1.516	(38.5)	2.008	(51.0)	2.165	(55.0)

CB 1 STYLES

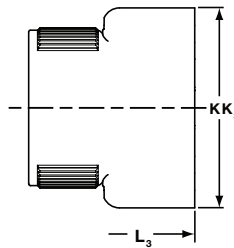


SHELL SIZE	M ±.016(0.40)		N -.006(0.15)		P ±.008(0.20)		Q MAX		S	
	IN	MM	IN	MM	IN	MM	IN	MM	IN	MM
10SL	0.717	(18.2)	0.717	(18.2)	0.110	(2.8)	0.811	(20.6)	0.992	(25.2)
12S	0.843	(21.4)	0.843	(21.4)	0.126	(3.2)	0.929	(23.6)	1.094	(27.8)
14S	0.969	(24.6)	0.969	(24.6)	0.126	(3.2)	1.000	(25.4)	1.173	(29.8)
16S	1.079	(27.4)	1.079	(27.4)	0.126	(3.2)	1.126	(28.6)	1.272	(32.3)
16	1.079	(27.4)	1.079	(27.4)	0.126	(3.2)	1.126	(28.6)	1.272	(32.3)
18	1.213	(30.8)	1.213	(30.8)	0.157	(4.0)	1.248	(31.7)	1.370	(34.8)
20	1.346	(34.2)	1.346	(34.2)	0.157	(4.0)	1.374	(34.9)	1.488	(37.8)
22	1.472	(37.4)	1.472	(37.4)	0.157	(4.0)	1.500	(38.1)	1.618	(41.1)
24	1.61	(40.9)	1.610	(40.9)	0.157	(4.0)	1.626	(41.3)	1.756	(44.6)
28	1.839	(46.7)	1.839	(46.7)	0.157	(4.0)	1.874	(47.6)	2.004	(50.9)
32	2.102	(53.4)	2.102	(53.4)	0.157	(4.0)	2.126	(54.0)	2.248	(57.1)
36	2.346	(59.6)	2.346	(59.6)	0.157	(4.0)	2.386	(60.6)	2.504	(63.6)

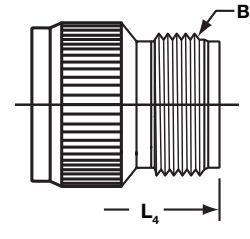
L ₁		B ₁ THREAD 2A
IN	MM	
1.276	(32.4)	9/16-24UNEF
1.276	(32.4)	5/8-24UNEF
1.276	(32.4)	3/4-20UNEF
1.276	(32.4)	7/8-20UNEF
1.575	(40.0)	7/8-20UNEF
1.634	(41.5)	1-20UNEF
1.634	(41.5)	1-1/8-18UNEF
1.634	(41.5)	1-1/4-18UNEF
1.634	(41.5)	1-3/8-18UNEF
1.673	(42.5)	1-5/8-18UNEF
1.673	(42.5)	1-7/8-16UN
1.673	(42.5)	2-1/8-16UN



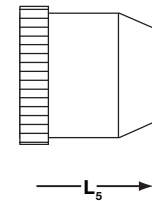
E



R



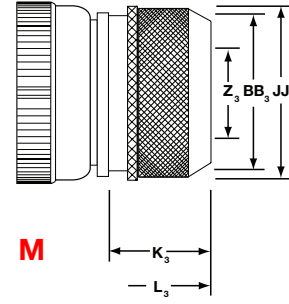
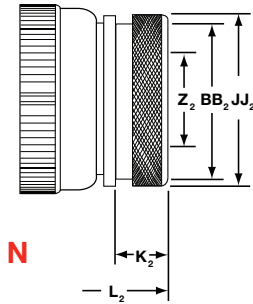
F



P

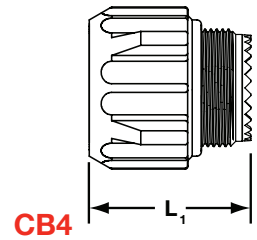
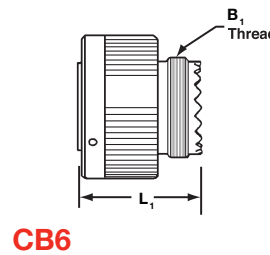
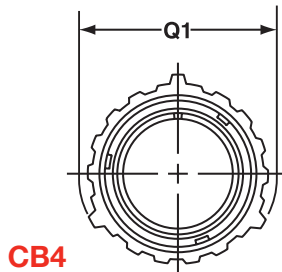
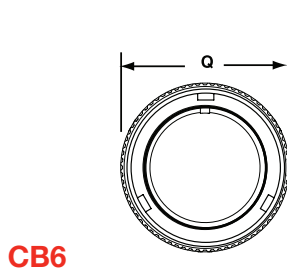
SHELL SIZE	L ₂ MAX		XX ₂ MAX		XX ₂ MIN		L ₃ MAX		KK ₃		L ₄ MAX		B ₂ THREAD 2A	L ₅ MAX	
	IN	MM	IN	MM	IN	MM	IN	MM	IN	MM	IN	MM		IN	MM
10SL	2.244	(57.0)	0.256	(6.5)	0.140	(3.6)	1.969	(50.0)	0.378	(9.6)	2.047	(52.0)	5/8-24UNEF	1.531	(38.9)
12S	2.244	(57.0)	0.256	(6.5)	0.140	(3.6)	2.047	(52.0)	0.406	(10.3)	2.047	(52.0)	5/8-24UNEF	1.531	(38.9)
14S	2.323	(59.0)	0.354	(9.0)	0.195	(5.0)	2.047	(52.0)	0.488	(12.4)	2.047	(52.0)	3/4-20UNEF	1.531	(38.9)
16S	2.362	(60.0)	0.433	(11.0)	0.255	(6.5)	2.283	(58.0)	0.606	(15.4)	2.323	(59.0)	7/8-20UNEF	1.531	(38.9)
16	2.677	(68.0)	0.433	(11.0)	0.255	(6.5)	2.283	(58.0)	0.606	(15.4)	2.323	(59.0)	7/8-20UNEF	1.968	(50.0)
18	2.835	(72.0)	0.559	(14.2)	0.285	(7.2)	2.559	(65.0)	0.724	(18.4)	2.480	(63.0)	1-20UNEF	1.968	(50.0)
20	2.835	(72.0)	0.622	(15.8)	0.350	(8.9)	2.559	(65.0)	0.866	(22.0)	2.480	(63.0)	1-3/16-18UNEF	2.188	(55.6)
22	2.835	(72.0)	0.622	(15.8)	0.350	(8.9)	2.559	(65.0)	0.972	(24.7)	2.598	(66.0)	1-3/16-18UNEF	2.188	(55.6)
24	3.071	(78.0)	0.843	(21.4)	0.468	(11.9)	2.638	(67.0)	1.087	(27.6)	2.717	(69.0)	1-7/16-18UNEF	2.188	(55.6)
28	3.110	(79.0)	0.843	(21.4)	0.468	(11.9)	2.638	(67.0)	1.244	(31.6)	2.756	(70.0)	1-7/16-18UNEF	2.188	(55.6)
32	3.071	(78.0)	1.051	(26.7)	0.664	(16.9)	2.638	(67.0)	1.516	(38.5)	2.795	(71.0)	1-3/4-18NS	2.188	(55.6)
36	3.071	(78.0)	1.248	(31.7)	0.694	(17.6)	2.638	(67.0)	1.752	(44.5)	2.874	(73.0)	2-18NS	2.188	(55.6)

CB 1 ENDBELL STYLES (CONTINUED)



SHELL SIZE	L_2 MAX		K_2 MAX		Z_2 MIN		BB_2 MAX		JJ_2 ±.008(0.20)		L_3 MAX		K_3 MAX		Z_3 MIN		BB_3 MAX		JJ_3 ±.008(0.20)	
	IN	MM	IN	MM	IN	MM	IN	MM	IN	MM	IN	MM	IN	MM	IN	MM	IN	MM	IN	MM
10SL	2.244	(57.0)	0.461	(11.7)	0.303	(7.7)	0.524	(13.3)	0.610	(15.5)	2.165	(55.0)	0.669	(17.0)	0.303	(7.7)	0.642	(16.3)	0.728	(18.5)
12S	2.244	(57.0)	0.461	(11.7)	0.311	(7.9)	0.524	(13.3)	0.610	(15.5)	2.283	(58.0)	0.669	(17.0)	0.366	(9.3)	0.669	(17.0)	0.787	(20.0)
14S	2.244	(57.0)	0.461	(11.7)	0.417	(10.6)	0.669	(17.0)	0.752	(19.1)	2.283	(58.0)	0.669	(17.0)	0.417	(10.6)	0.787	(20.0)	0.866	(22.0)
16S	2.244	(57.0)	0.461	(11.7)	0.531	(13.5)	0.862	(21.9)	0.941	(23.9)	2.756	(70.0)	0.709	(18.0)	0.531	(13.5)	0.906	(23.0)	0.984	(25.0)
16	2.480	(63.0)	0.453	(11.5)	0.531	(13.5)	0.862	(21.9)	0.941	(23.9)	2.756	(70.0)	0.709	(18.0)	0.531	(13.5)	0.906	(23.0)	0.984	(25.0)
18	2.559	(65.0)	0.453	(11.5)	0.575	(14.6)	0.862	(21.9)	0.941	(23.9)	2.756	(70.0)	0.709	(18.0)	0.575	(14.6)	0.965	(24.5)	1.102	(28.0)
20	2.677	(68.0)	0.500	(12.7)	0.736	(18.7)	1.031	(26.2)	1.165	(29.6)	2.756	(70.0)	0.709	(18.0)	0.728	(18.5)	1.122	(28.5)	1.260	(32.0)
22	2.677	(68.0)	0.500	(12.7)	0.819	(20.8)	1.031	(26.2)	1.165	(29.6)	2.756	(70.0)	0.709	(18.0)	0.819	(20.8)	1.201	(30.5)	1.339	(34.0)
24	2.756	(70.0)	0.500	(12.7)	0.969	(24.6)	1.358	(34.5)	1.488	(37.8)	2.756	(70.0)	0.709	(18.0)	0.969	(24.6)	1.358	(34.5)	1.496	(38.0)
28	2.795	(71.0)	0.500	(12.7)	1.063	(27.0)	1.358	(34.5)	1.488	(37.8)	2.756	(70.0)	0.709	(18.0)	1.063	(27.0)	1.476	(37.5)	1.614	(41.0)
32	2.913	(74.0)	0.598	(15.2)	1.311	(33.3)	1.717	(43.6)	1.882	(47.8)	2.953	(75.0)	0.709	(18.0)	1.311	(33.3)	1.732	(44.0)	1.890	(48.0)
36	2.913	(74.0)	0.598	(15.2)	1.516	(38.5)	1.717	(43.6)	1.882	(47.8)	3.346	(85.0)	0.709	(18.0)	1.516	(38.5)	2.008	(51.0)	2.165	(55.0)

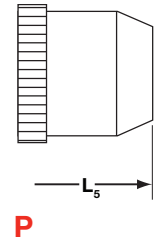
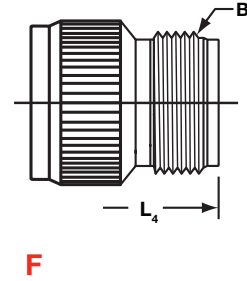
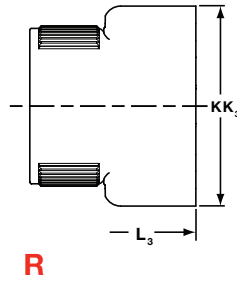
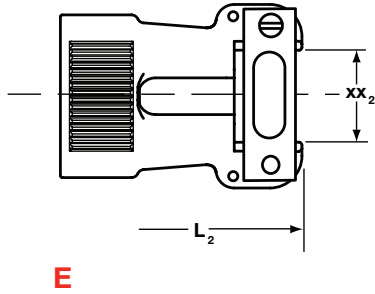
CB 4,6 STYLES



SHELL SIZE	Q MAX (CB6)		Q1 MAX (CB4)	
	IN	MM	IN	MM
10SL	0.898	(22.8)	1.122	(28.5)
12S	1.024	(26.0)	-	-
14S	1.150	(29.2)	1.378	(35.0)
16S	1.260	(32.0)	1.496	(38.0)
16	1.260	(32.0)	1.496	(38.0)
18	1.437	(36.5)	1.713	(43.5)
20	1.571	(39.9)	1.811	(46.0)
22	1.697	(43.1)	1.988	(50.5)
24	1.835	(46.6)	2.126	(54.0)
28	2.102	(53.4)	2.402	(61.0)
32	2.366	(60.1)	2.661	(67.6)
36	2.610	(66.3)	2.925	(74.3)

L_1 MAX		B_1 THREAD 2A
IN	MM	
0.969	(24.6)	9/16-24UNEF
0.969	(24.6)	5/8-24UNEF
0.969	(24.6)	3/4-20UNEF
0.969	(24.6)	7/8-20UNEF
1.343	(34.1)	7/8-20UNEF
1.343	(34.1)	1-20UNEF
1.343	(34.1)	1-1/8-18UNEF
1.343	(34.1)	1-1/4-18UNEF
1.406	(35.7)	1-3/8-18UNEF
1.406	(35.7)	1-5/8-18UNEF
1.469	(37.3)	1-7/8-16UN
1.469	(37.3)	2-1/8-16UN

CB 4,6 STYLES

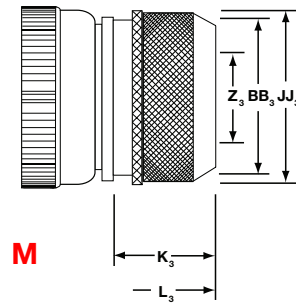
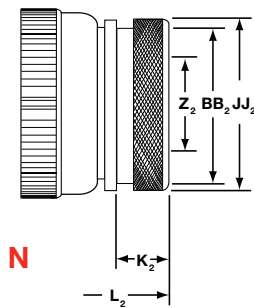


SHELL SIZE	L ₂ MAX		XX ₂ MAX		XX ₂ MIN	
	IN	MM	IN	MM	IN	MM
10SL	2.165	(55.0)	0.256	(6.5)	0.140	(3.6)
12S	2.165	(55.0)	0.256	(6.5)	0.140	(3.6)
14S	2.362	(60.0)	0.354	(9.0)	0.195	(5.0)
16S	2.362	(60.0)	0.433	(11.0)	0.255	(6.5)
16	2.756	(70.0)	0.433	(11.0)	0.255	(6.5)
18	2.953	(75.0)	0.559	(14.2)	0.285	(7.2)
20	2.953	(75.0)	0.622	(15.8)	0.350	(8.9)
22	2.953	(75.0)	0.622	(15.8)	0.350	(8.9)
24	3.543	(90.0)	0.843	(21.4)	0.468	(11.9)
28	3.543	(90.0)	0.843	(21.4)	0.468	(11.9)
32	3.543	(90.0)	1.051	(26.7)	0.664	(16.9)
36	3.937	(100.0)	1.248	(31.7)	0.694	(17.6)

L ₃ MAX		KK ₃	
IN	MM	IN	MM
1.969	(50.0)	0.378	(9.6)
1.969	(50.0)	0.406	(10.3)
1.969	(50.0)	0.488	(12.4)
1.969	(50.0)	0.606	(15.4)
2.362	(60.0)	0.606	(15.4)
2.441	(62.0)	0.724	(18.4)
2.441	(62.0)	0.866	(22.0)
2.441	(62.0)	0.972	(24.7)
2.441	(62.0)	1.087	(27.6)
2.441	(62.0)	1.244	(31.6)
2.441	(62.0)	1.516	(38.5)
2.441	(62.0)	1.752	(44.5)

L ₄ MAX		B ₄ THREAD 2A	L ₅ MAX	
IN	MM		IN	MM
1.969	(50.0)	5/8-24UNEF	1.562	(39.7)
1.969	(50.0)	5/8-24UNEF	1.562	(39.7)
1.969	(50.0)	3/4-20UNEF	1.562	(39.7)
1.969	(50.0)	7/8-20UNEF	1.562	(39.7)
2.362	(60.0)	7/8-20UNEF	2.000	(50.8)
2.362	(60.0)	1-20UNEF	2.000	(50.8)
2.362	(60.0)	1-3/16-18UNEF	2.125	(54.0)
2.362	(60.0)	1-3/16-18UNEF	2.125	(54.0)
2.559	(65.0)	1-7/16-18UNEF	2.125	(54.0)
2.559	(65.0)	1-7/16-18UNEF	2.125	(54.0)
2.559	(65.0)	1-3/4-18NS	2.180	(55.4)
3.150	(80.0)	2-18NS	2.180	(55.4)

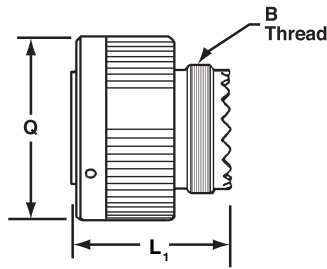
CB 6 ENDBELL STYLES



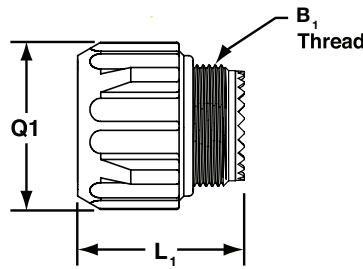
SHELL SIZE	L ₂ MAX		K ₂ MAX		Z ₂ MIN		BB ₂ MAX		JJ ₂ ±.008(0.20)	
	IN	MM	IN	MM	IN	MM	IN	MM	IN	MM
10SL	1.969	(50.0)	0.461	(11.7)	0.303	(7.7)	0.524	(13.3)	0.610	(15.5)
12S	1.969	(50.0)	0.461	(11.7)	0.311	(7.9)	0.524	(13.3)	0.610	(15.5)
14S	1.969	(50.0)	0.461	(11.7)	0.417	(10.6)	0.669	(17.0)	0.752	(19.1)
16S	1.969	(50.0)	0.461	(11.7)	0.531	(13.5)	0.862	(21.9)	0.941	(23.9)
16	2.362	(60.0)	0.461	(11.7)	0.531	(13.5)	0.862	(21.9)	0.941	(23.9)
18	2.362	(60.0)	0.461	(11.7)	0.575	(14.6)	0.862	(21.9)	0.941	(23.9)
20	2.559	(65.0)	0.500	(12.7)	0.736	(18.7)	1.031	(26.2)	1.165	(29.6)
22	2.559	(65.0)	0.500	(12.7)	0.819	(20.8)	1.031	(26.2)	1.165	(29.6)
24	2.559	(65.0)	0.500	(12.7)	0.969	(24.6)	1.358	(34.5)	1.488	(37.8)
28	2.559	(65.0)	0.500	(12.7)	1.063	(27.0)	1.358	(34.5)	1.488	(37.8)
32	2.756	(70.0)	0.598	(15.2)	1.311	(33.3)	1.717	(43.6)	1.882	(47.8)
36	3.150	(80.0)	0.598	(15.2)	1.516	(38.5)	1.717	(43.6)	1.882	(47.8)

L ₃ MAX		K ₃ MAX		Z ₃ MIN		BB ₃ MAX		JJ ₃ ±.008(0.20)	
IN	MM	IN	MM	IN	MM	IN	MM	IN	MM
2.165	(55.0)	0.669	(17.0)	0.303	(7.7)	0.642	(16.3)	0.728	(18.5)
2.165	(55.0)	0.669	(17.0)	0.366	(9.3)	0.669	(17.0)	0.787	(20.0)
2.165	(55.0)	0.669	(17.0)	0.417	(10.6)	0.787	(20.0)	0.866	(22.0)
2.362	(60.0)	0.709	(18.0)	0.531	(13.5)	0.906	(23.0)	0.984	(25.0)
2.756	(70.0)	0.709	(18.0)	0.531	(13.5)	0.906	(23.0)	0.984	(25.0)
2.756	(70.0)	0.709	(18.0)	0.575	(14.6)	0.965	(24.5)	1.102	(28.0)
2.756	(70.0)	0.709	(18.0)	0.728	(18.5)	1.122	(28.5)	1.260	(32.0)
2.756	(70.0)	0.709	(18.0)	0.819	(20.8)	1.201	(30.5)	1.339	(34.0)
2.756	(70.0)	0.709	(18.0)	0.969	(24.6)	1.358	(34.5)	1.496	(38.0)
2.756	(70.0)	0.709	(18.0)	1.063	(27.0)	1.476	(37.5)	1.614	(41.0)
2.756	(70.0)	0.709	(18.0)	1.311	(33.3)	1.732	(44.0)	1.890	(48.0)
3.150	(80.0)	0.709	(18.0)	1.516	(38.5)	2.008	(51.0)	2.165	(55.0)

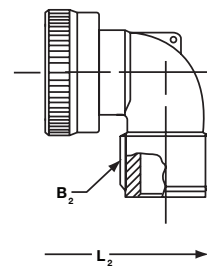
CB 6T ENDBELL STYLES



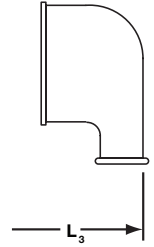
CB6T BARREL



CB4T BARREL



CB6T ENDBELL



CB6TP

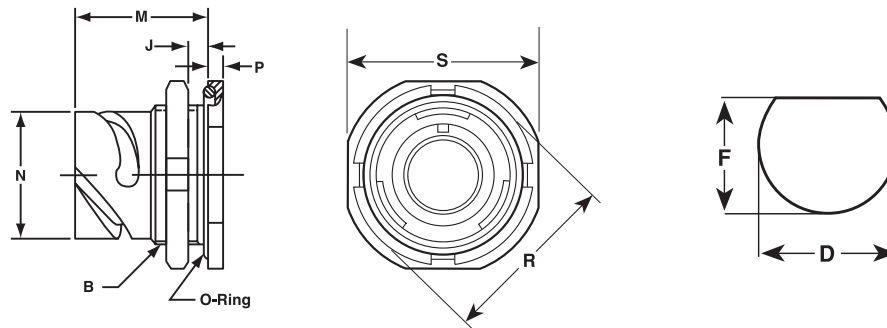
SHELL SIZE	Q (CB6) MAX		Q1 (CB4) MAX	
	IN	MM	IN	MM
10SL	0.898	(22.8)	1.122	(28.5)
12S	1.024	(26.0)	-	-
14S	1.150	(29.2)	1.378	(35.0)
16S	1.260	(32.0)	1.496	(38.0)
16	1.260	(32.0)	1.496	(38.0)
18	1.437	(36.5)	1.713	(43.5)
20	1.571	(39.9)	1.811	(46.0)
22	1.697	(43.1)	1.988	(50.5)
24	1.835	(46.6)	2.126	(54.0)
28	2.102	(53.4)	2.402	(61.0)
32	2.366	(60.1)	2.661	(67.6)
36	2.610	(66.3)	2.925	(74.3)

L ₁		B ₁ THREAD 2A
IN	MM	
0.969	(24.6)	9/16-24UNEF
0.969	(24.6)	5/8-24UNEF
0.969	(24.6)	3/4-20UNEF
0.969	(24.6)	7/8-20UNEF
1.343	(34.1)	7/8-20UNEF
1.343	(34.1)	1-20UNEF
1.343	(34.1)	1-1/8-18UNEF
1.343	(34.1)	1-1/4-18UNEF
1.406	(35.7)	1-3/8-18UNEF
1.406	(35.7)	1-5/8-18UNEF
1.469	(37.3)	1-7/8-16UN
1.469	(37.3)	2-1/8-16UN

L ₂ MAX		B ₂ THREAD 2A
IN	MM	
2.188	(55.6)	5/8-24UNEF
2.188	(55.6)	5/8-24UNEF
2.312	(58.7)	3/4-20UNEF
2.406	(61.1)	7/8-20UNEF
2.781	(70.6)	7/8-20UNEF
2.844	(72.2)	1-20UNEF
3.250	(82.6)	1-3/16-18UNEF
3.250	(82.6)	1-3/16-18UNEF
3.719	(94.5)	1-7/16-18UNEF
3.719	(94.5)	1-7/16-18UNEF
4.188	(106.4)	1-3/4-18NS
4.297	(109.1)	2-18NS

L ₃ MAX	
IN	MM
1.463	(37.2)
1.600	(40.6)
1.600	(40.6)
1.600	(40.6)
1.910	(48.5)
2.100	(53.3)
2.100	(53.3)
2.281	(57.9)
2.485	(63.1)
2.485	(63.1)
2.485	(63.1)

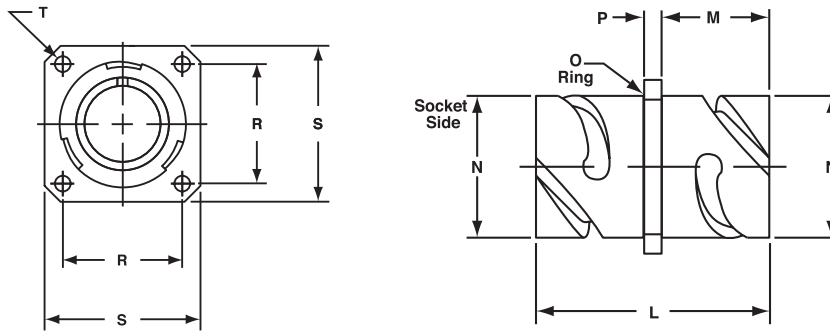
CB7 STYLES



SHELL SIZE	B THREAD 2A	J MIN	J MAX	L	M	N	P	R	S	D	F
10SL	7/8-20UNEF	0.051 (1.3)	0.236 (6.0)	1.150 (29.2)	1.024 (26.0)	0.717 (18.2)	0.126 (3.2)	1.240 (31.5)	1.252 (31.8)	0.894 (22.7)	0.823 (20.9)
14S	1-1/8-18NEF	0.051 (1.3)	0.236 (6.0)	1.150 (29.2)	1.024 (26.0)	0.969 (24.6)	0.126 (3.2)	1.492 (37.9)	1.500 (38.1)	1.134 (28.8)	1.071 (27.2)
16S	1-1/4-18NEF	0.051 (1.3)	0.236 (6.0)	1.150 (29.2)	1.024 (26.0)	1.079 (27.4)	0.126 (3.2)	1.614 (41.0)	1.622 (41.2)	1.260 (32.0)	1.197 (30.4)
16	1-1/4-18NEF	0.051 (1.3)	0.236 (6.0)	1.484 (37.7)	1.358(34.5)	1.079 (27.4)	0.157 (4.0)	1.614 (41.0)	1.622 (41.2)	1.260 (32.0)	1.197 (30.4)
18	1-3/8-18NEF	0.051 (1.3)	0.236 (6.0)	1.575 (40.0)	1.417 (36.0)	1.213 (30.8)	0.157 (4.0)	1.764 (44.8)	1.772 (45.0)	1.382 (35.1)	1.323 (33.6)
20	1-1/2-18NEF	0.051 (1.3)	0.236 (6.0)	1.575 (40.0)	1.417 (36.0)	1.346 (34.2)	0.157 (4.0)	1.929 (49.0)	1.937 (49.2)	1.504 (38.2)	1.449 (36.8)
22	1-5/8-18NEF	0.051 (1.3)	0.236 (6.0)	1.575 (40.0)	1.417 (36.0)	1.472 (37.4)	0.157 (4.0)	2.055 (52.2)	2.063 (52.4)	1.654 (42.0)	1.571 (39.9)
24	1-3/4-18NEF	0.051 (1.3)	0.236 (6.0)	1.575 (40.0)	1.417 (36.0)	1.610 (40.9)	0.157 (4.0)	2.165 (55.0)	2.173 (55.2)	1.760 (44.7)	1.697 (43.1)
28	2-18NEF	0.051 (1.3)	0.236 (6.0)	1.575 (40.0)	1.417 (36.0)	1.839 (46.7)	0.157 (4.0)	2.441 (62.0)	2.449 (62.2)	2.012 (51.1)	1.937 (49.2)
32	2-1/4-16UN	0.051 (1.3)	0.236 (6.0)	1.575 (40.0)	1.417 (36.0)	2.102 (53.4)	0.157 (4.0)	2.677 (68.0)	2.685 (68.2)	2.260 (57.4)	2.193 (55.7)
36	2-1/2-16UN	0.051 (1.3)	0.236 (6.0)	1.575 (40.0)	1.417 (36.0)	2.346 (59.6)	0.157 (4.0)	2.953 (75.0)	2.961 (75.2)	2.512 (63.8)	2.441 (62.0)

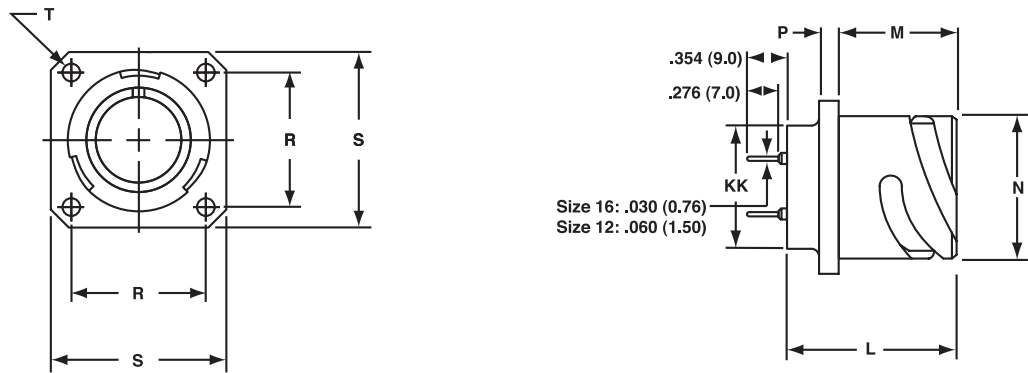
All dimensions in inches (millimeters in parenthesis)

CB9 STYLES



SHELL SIZE	M ±.012(0.30)		N ±.008(0.20)		P ±.008(0.20)		R ±.004(0.10)		S ±.012(0.30)		T		L ±.020(0.70)		PANEL THICKNESS	
	IN	MM	IN	MM	IN	MM	IN	MM	IN	MM	IN	MM	IN	MM	IN	MM
10SL	0.559	(14.2)	0.717	(18.2)	0.110	(2.8)	0.717	(18.2)	1.000	(25.4)	0.126	(3.2)	1.476	(37.5)	0.325	(8.2)
12S	0.559	(14.2)	0.843	(21.4)	0.126	(3.2)	0.811	(20.6)	1.102	(28.0)	0.126	(3.2)	1.476	(37.5)	0.325	(8.2)
14S	0.559	(14.2)	0.969	(24.6)	0.126	(3.2)	0.906	(23.0)	1.181	(30.0)	0.126	(3.2)	1.476	(37.5)	0.325	(8.2)
16S	0.559	(14.2)	1.079	(27.4)	0.126	(3.2)	0.969	(24.6)	1.280	(32.5)	0.126	(3.2)	1.476	(37.5)	0.325	(8.2)
16	0.748	(19.0)	1.079	(27.4)	0.126	(3.2)	0.969	(24.6)	1.280	(32.5)	0.126	(3.2)	2.024	(51.4)	0.445	(11.3)
18	0.748	(19.0)	1.213	(30.8)	0.157	(4.0)	1.063	(27.0)	1.378	(35.0)	0.126	(3.2)	2.024	(51.4)	0.445	(11.3)
20	0.748	(19.0)	1.346	(34.2)	0.157	(4.0)	1.157	(29.4)	1.496	(38.0)	0.126	(3.2)	2.024	(51.4)	0.445	(11.3)
22	0.748	(19.0)	1.472	(37.4)	0.157	(4.0)	1.252	(31.8)	1.614	(41.0)	0.126	(3.2)	2.024	(51.4)	0.445	(11.3)
24	0.811	(20.6)	1.610	(40.9)	0.157	(4.0)	1.374	(34.9)	1.752	(44.5)	0.146	(3.7)	2.024	(51.4)	0.383	(9.7)
28	0.811	(20.6)	1.839	(46.7)	0.157	(4.0)	1.563	(39.7)	2.000	(50.8)	0.146	(3.7)	2.024	(51.4)	0.383	(9.7)
32	0.874	(22.2)	2.102	(53.4)	0.157	(4.0)	1.752	(44.5)	2.244	(57.0)	0.169	(4.3)	2.024	(51.4)	0.320	(8.1)
36	0.874	(22.2)	2.346	(59.6)	0.157	(4.0)	1.937	(49.2)	2.500	(63.5)	0.169	(4.3)	2.024	(51.4)	0.383	(9.7)

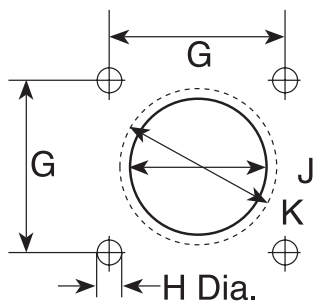
CB PC PIN STLYES



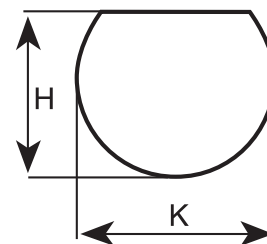
SHELL SIZE	M ±.016(0.40)		N ±.006(0.15)		P MAX		R ±.006(0.10)		S ±.016(0.40)		T		L ±.012(0.30)		KK MAX	
	IN	MM	IN	MM	IN	MM	IN	MM	IN	MM	IN	MM	IN	MM	IN	MM
10SL	0.717	(18.2)	0.717	(18.2)	0.110	(2.8)	0.717	(18.2)	1.000	(25.4)	0.126	(3.2)	0.972	(24.7)	0.638	(16.2)
12S	0.717	(18.2)	0.843	(21.4)	0.126	(3.2)	0.811	(20.6)	1.102	(28.0)	0.126	(3.2)	0.972	(24.7)	0.638	(16.2)
14S	0.717	(18.2)	0.969	(24.6)	0.126	(3.2)	0.906	(23.0)	1.181	(30.0)	0.126	(3.2)	0.972	(24.7)	0.756	(19.2)
16S	0.717	(18.2)	1.079	(27.4)	0.126	(3.2)	0.969	(24.6)	1.280	(32.5)	0.126	(3.2)	0.972	(24.7)	0.882	(22.4)
16	0.846	(21.5)	1.079	(27.4)	0.126	(3.2)	0.969	(24.6)	1.280	(32.5)	0.126	(3.2)	1.331	(33.8)	0.882	(22.4)
18	0.907	(23.1)	1.213	(30.8)	0.157	(4.0)	1.063	(27.0)	1.378	(35.0)	0.126	(3.2)	1.331	(33.8)	1.008	(25.6)
20	0.907	(23.1)	1.346	(34.2)	0.157	(4.0)	1.157	(29.4)	1.496	(38.0)	0.126	(3.2)	1.331	(33.8)	1.142	(29.0)
22	0.907	(23.1)	1.472	(37.4)	0.157	(4.0)	1.252	(31.8)	1.614	(41.0)	0.126	(3.2)	1.331	(33.8)	1.268	(32.2)
24	0.907	(23.1)	1.610	(40.9)	0.157	(4.0)	1.374	(34.9)	1.752	(44.5)	0.146	(3.7)	1.331	(33.8)	1.390	(35.3)
28	0.947	(24.1)	1.839	(46.7)	0.157	(4.0)	1.563	(39.7)	2.000	(50.8)	0.146	(3.7)	1.331	(33.8)	1.630	(41.4)
32	0.947	(24.1)	2.102	(53.4)	0.157	(4.0)	1.752	(44.5)	2.244	(57.0)	0.169	(4.3)	1.331	(33.8)	1.882	(47.8)
36	0.947	(24.1)	2.346	(59.6)	0.157	(4.0)	1.937	(49.2)	2.500	(63.5)	0.169	(4.3)	1.331	(33.8)	2.130	(54.1)

Note: Please contact us for centerline spacing of individual layouts.

PANEL CUTOUTS



Dim. J=flange in front of panel
 Dim. K=flange at rear of panel
 → See sealing screws on page 195

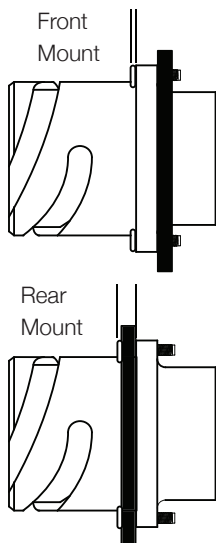


Note: for CB7 Panel cutouts
 → See page 98

SHELL SIZE	FLANGE		STYLE 0-2-9 FRONT MOUNT	STYLE 0-2-9 REAR MOUNT
	MOUNTING	STYLE 0-2-9 HOLE DIAMETER		
	G	H	J	K
10SL	0.717 (18.2)	0.134 (3.4)	0.646 (16.4)	0.728 (18.5)
12S	0.811 (20.6)	0.134 (3.4)	0.646 (16.4)	0.854 (21.7)
14S	0.906 (23.0)	0.134 (3.4)	0.776 (19.7)	0.980 (24.9)
16S	0.969 (24.6)	0.134 (3.4)	0.902 (22.9)	1.091 (27.7)
16	0.969 (24.6)	0.134 (3.4)	0.902 (22.9)	1.091 (27.7)
18	1.063 (27.0)	0.134 (3.4)	1.028 (26.1)	1.224 (31.1)
20	1.157 (29.4)	0.134 (3.4)	1.161 (29.5)	1.358 (34.5)
22	1.252 (31.8)	0.134 (3.4)	1.287 (32.7)	1.488 (37.8)
24	1.374 (34.9)	0.154 (3.9)	1.417 (36.0)	1.626 (41.3)
28	1.563 (39.7)	0.154 (3.9)	1.654 (42.0)	1.854 (47.1)
32	1.752 (44.5)	0.177 (4.5)	1.902 (48.3)	2.118 (53.8)
36	1.937 (49.2)	0.177 (4.5)	2.150 (54.6)	2.362 (60.0)

STYLE CB7 REAR MOUNT	
H	K
0.823 (21)	0.894 (22.7)
0.949 (24)	1.012 (25.7)
1.071 (27)	1.134 (28.8)
1.197 (30)	1.260 (32.0)
1.197 (30)	1.260 (32.0)
1.323 (34)	1.382 (35.1)
1.449 (37)	1.504 (38.2)
1.571 (40)	1.654 (42.0)
1.697 (43)	1.760 (44.7)
1.937 (49)	2.012 (51.1)
2.193 (56)	2.260 (57.4)
2.441 (62)	2.512 (63.8)

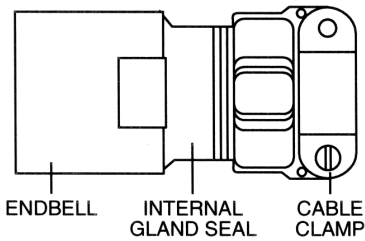
PANEL THICKNESS



SHELL SIZE	REAR MOUNT	FRONT MOUNT
10SL	.315 (8.00)	.138 (3.50)
12S	.315 (8.00)	.138 (3.50)
14S	.315 (8.00)	.138 (3.50)
16S	.315 (8.00)	.138 (3.50)
16	.256 (6.50)	.138 (3.50)
18	.315 (8.00)	.138 (3.50)
20	.315 (8.00)	.138 (3.50)
22	.315 (8.00)	.138 (3.50)
24	.315 (8.00)	.197 (5.00)
28	.315 (8.00)	.197 (5.00)
32	.354 (9.00)	.236 (6.00)
36	.354 (9.00)	.236 (6.00)

All dimensions in inches (millimeters in parenthesis)

STYLE J

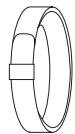
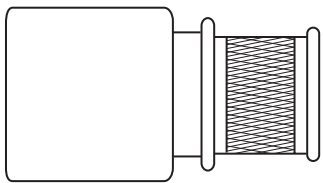


High-reliability, gland-seal endbell with an integrated compression disc that provides a watertight seal around the outside of a round, jacketed cable. Supplied with cable clamp. Wire sealing range is as follows:

SHELL SIZE	WIRE DIAMETER INCHES (MM)	
	MAX	MIN
10SL	.31 (8.0)	.13 (3.3)
14S	.44 (11.2)	.21 (5.3)
16S	.53 (13.5)	.32 (8.1)
16	.53 (13.5)	.32 (8.1)
18	.63 (15.9)	.43 (10.9)
20	.75 (19.1)	.49 (11.9)
22	.75 (19.1)	.49 (11.9)
24	.94 (23.9)	.67 (17.0)
28	.94 (23.9)	.67 (17.0)
32	1.25 (31.8)	.96 (24.4)
36	1.37 (34.9)	1.07 (27.4)

STYLE U (POTTED PREFERRED)

STYLE D (GROMMET & FERRULE, CONTACT US)



BAND

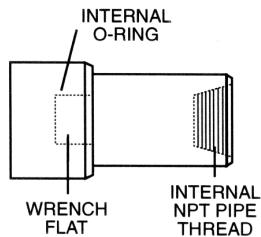


CONSTANT FORCE SPRING

ZT93-03-003-1
EMI SHIELD TAPE

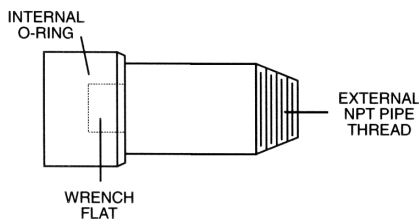
This endbell is for use with unshielded, braided-shield or cable to terminate and extend the shield through the connector. There are three basic ways to terminate the U and D style endbell. One version uses a metal, constant-force spring to captivate the shield and can be reused/reworked if the connector needs to be serviced. The second version uses a stainless steel strap to lock the shield to the endbell. The third version is to use our conductive cloth EMI shield tape to easily tape the endbell to the shield. Heat shrink boots are used to environmentally seal the endbell and provide a smooth, finished appearance. → See pages 196-201 for boot

STYLE I



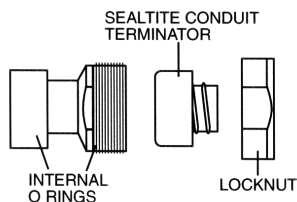
This endbell is internally threaded to accept externally threaded NPT pipe threads. A broad range of standard NPT thread sizes can be accommodated. Contact us for ordering information.

STYLE X



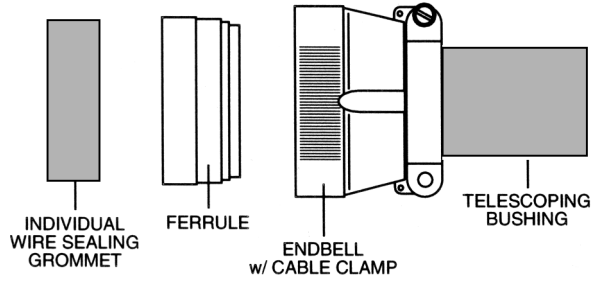
This endbell is externally threaded to accept internally threaded NPT pipe threads. A broad range of standard NPT thread sizes can be accommodated. Contact us for ordering information.

STYLE ST



These endbells directly accept SealTite conduit. A locknut and O-ring insures a watertight connection. Normally supplied straight but right angle and 45° versions are available. A broad range of SealTite tubing diameters can be accommodated. Contact us for ordering information.

STYLE E

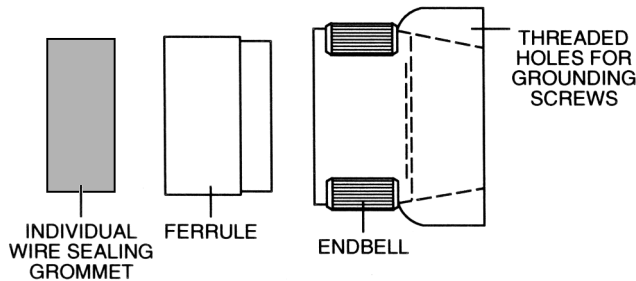


Supplied standard for CB only.

Endbell with integrated cable clamp that is supplied with individual wire-sealing grommet and ferrule. A telescoping neoprene bushing is captivated by the clamp. If desired, these bushings can be stacked to provide the optimum inside diameter for your cable.

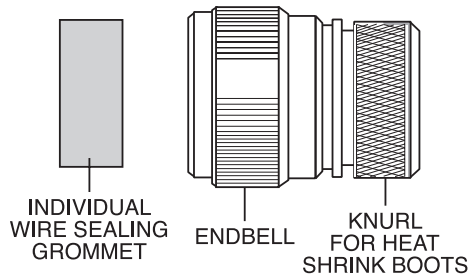
⇒ See page 110 or contact us for ordering information

STYLE R



Endbell without cable clamp that is supplied with individual wire sealing grommet and ferrule. Rear section has two threaded holes to accommodate grounding screws or dust cap chains.

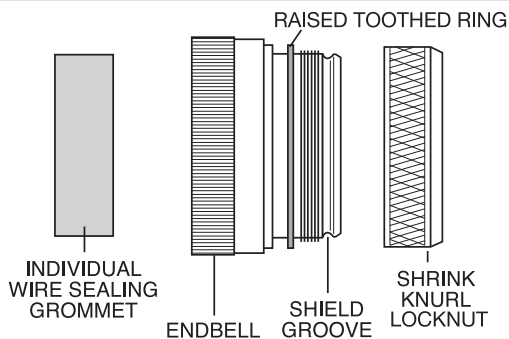
STYLE N



This endbell is designed for use with shrink boots or shrink tubing. A knurled rear section with ledge provides an excellent surface for the tubing to grab the metal endbell. Supplied with individual wire sealing grommet. Ferrule not required.

⇒ See Heat Shrink Boots on pages 196-201

STYLE M



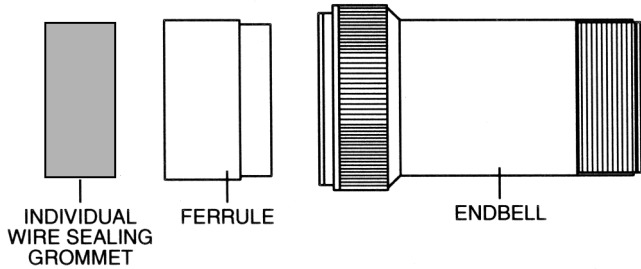
For use with braid-shielded cable to terminate and extend the shield through the connector. Typically used with a shrink boot. Supplied with individual wire sealing grommet; ferrule not required.

⇒ See Heat Shrink Boots on pages 196-201

ASSEMBLY OF SHIELDED ENDBELL (USING OPTIONAL SHRINK BOOT)

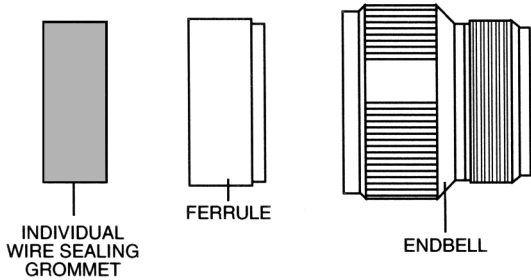
1. Remove the locknut and slide shrink boot and locknut over cable in proper sequence for re-assembly.
2. Slide screen meshing on cable over the endbell so that it covers the rounded groove and locknut threads.
3. Fasten the screen into the rounded groove with baling wire.
4. Fold back the protruding screen over the baling wire.
5. Slide the locknut over the folded back screen so that the meshing is clamped under the nut and appears under the locknut facing the cable.
6. Tighten locknut.
7. Slide shrink boot over knurled locknut and raised toothed ring.
8. Shrink in place over the endbell first, then continue down the cable.

STYLE L



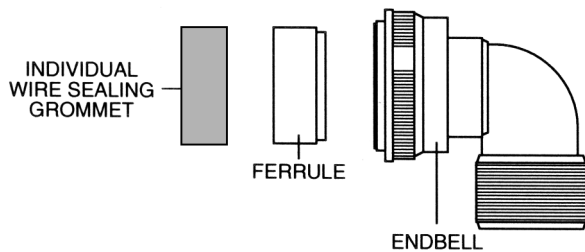
Long-extension endbell that allows additional room for wiring. Accepts Style A or C cable clamps.
 ⇒ See pages 104-105 for cable clamps

STYLE F



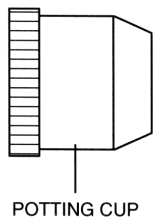
Standard endbell for use with Style A or C cable clamps. Supplied with individual wire sealing grommet and ferrule. This endbell can also be used with appropriately sized plastic flex tubing which is press-fit over the rear threads. ⇒ See pages 104-105 for cable clamps

STYLE T



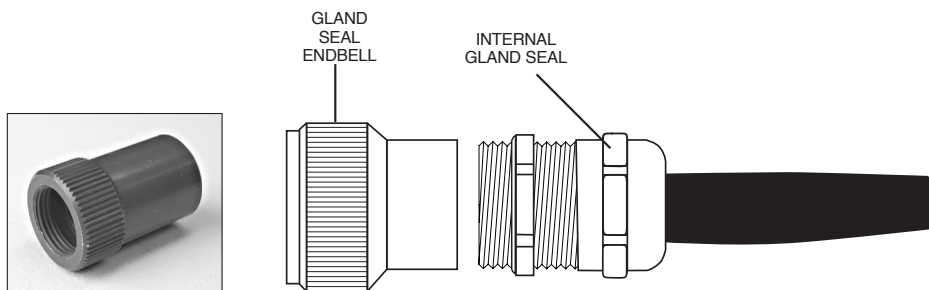
Right angle endbell supplied with individual wire sealing grommet and ferrule. Accepts Style A or C cable clamp. Internal teeth inside the endbell mate with teeth on the rear of the connector to allow the angled endbell to be locked into a specific orientation.
 ⇒ See pages 104-105 for cable clamps

STYLE P



Potting cup endbell sealed with epoxy. After wire termination, the inside of the cup is filled with potting compound forming a solid, permanent, watertight seal around the wires.
 ⇒ See pages 200 for potting compound and applicator

STYLE PG



Lower-cost, metal, gland-seal endbell which comes in a variety of wire sealing ranges. Contact us with your cable outside diameter for appropriate part number.
 ⇒ See pages 206-207