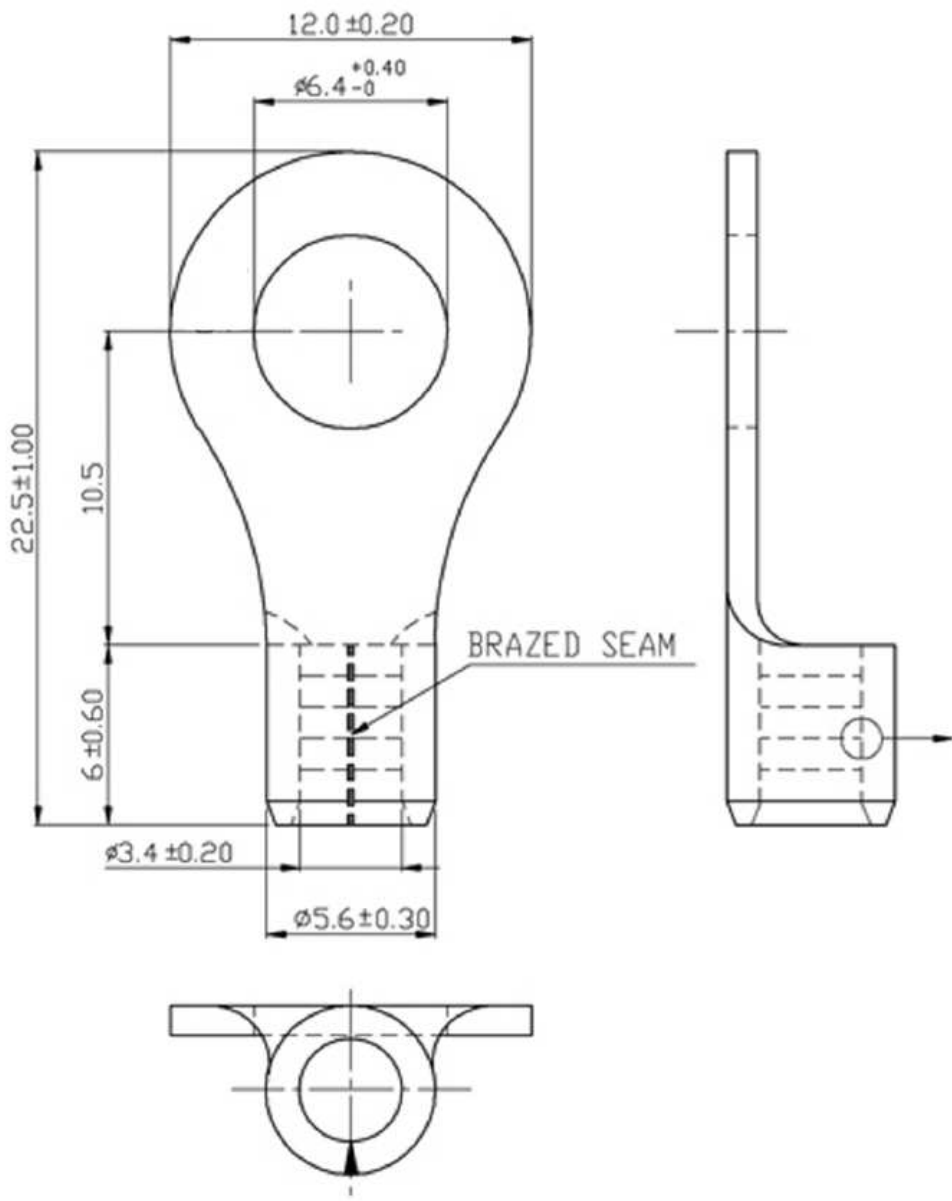


REVISIONS					REV	ZONE	ECO#	DESCRIPTION	DRAW	APPD	DATE
					A			INITIAL RELEASE	KC	-	



- NOTES:**
1. MAXIMUM ELECTRIC CURRENT: AWG 12: 35A  
AWG 10: 50A
  2. WIRE RANGE: 12-10 AWG (4-6 mm<sup>2</sup>)
  3. SURFACE TREATMENT: TIN PLATED
  4. THICKNESS: 1.00 mm
  5. MAX ELECTRICAL RATING: 150° 600V

NOTE: CAD GENERATED DRAWING DO NOT UPDATE MANUALLY.

<b>12-10 AWG RING TERM, NON-INSULATED</b> <small>UNLESS OTHERWISE SPECIFIED, DIMENSIONS ARE IN MM  TOLERANCE EXCEPT AS NOTED:  0-50 mm ±0.20    50-100 mm ±0.40  100-250 mm ±0.50    250-500 mm ±0.75</small>		<b>IPACC-R-NB5-6</b>			
<small>DATE CODE: 2A589</small>		<small>THIRD ANGLE PROJECTION</small>		<small>2180 Hornig Road, Philadelphia, PA 19116</small>	
<small>SIZE: A</small>	<small>SCALE: NTS</small>	<small>SHEET 1 OF 1</small>	<small>DATE: 4/3/2020</small>	<small>REV: A</small>	<small>NOTICE OF CONFIDENTIALITY  THIS DRAWING IS THE PROPERTY OF PEI-GENESIS. ALL RIGHTS RESERVED. REPRODUCTION BY ANY MEANS OR DISTRIBUTION TO THIRD PARTIES IS STRICTLY PROHIBITED WITHOUT THE WRITTEN PERMISSION OF AN AUTHORIZED AGENT OF PEI-GENESIS.</small>