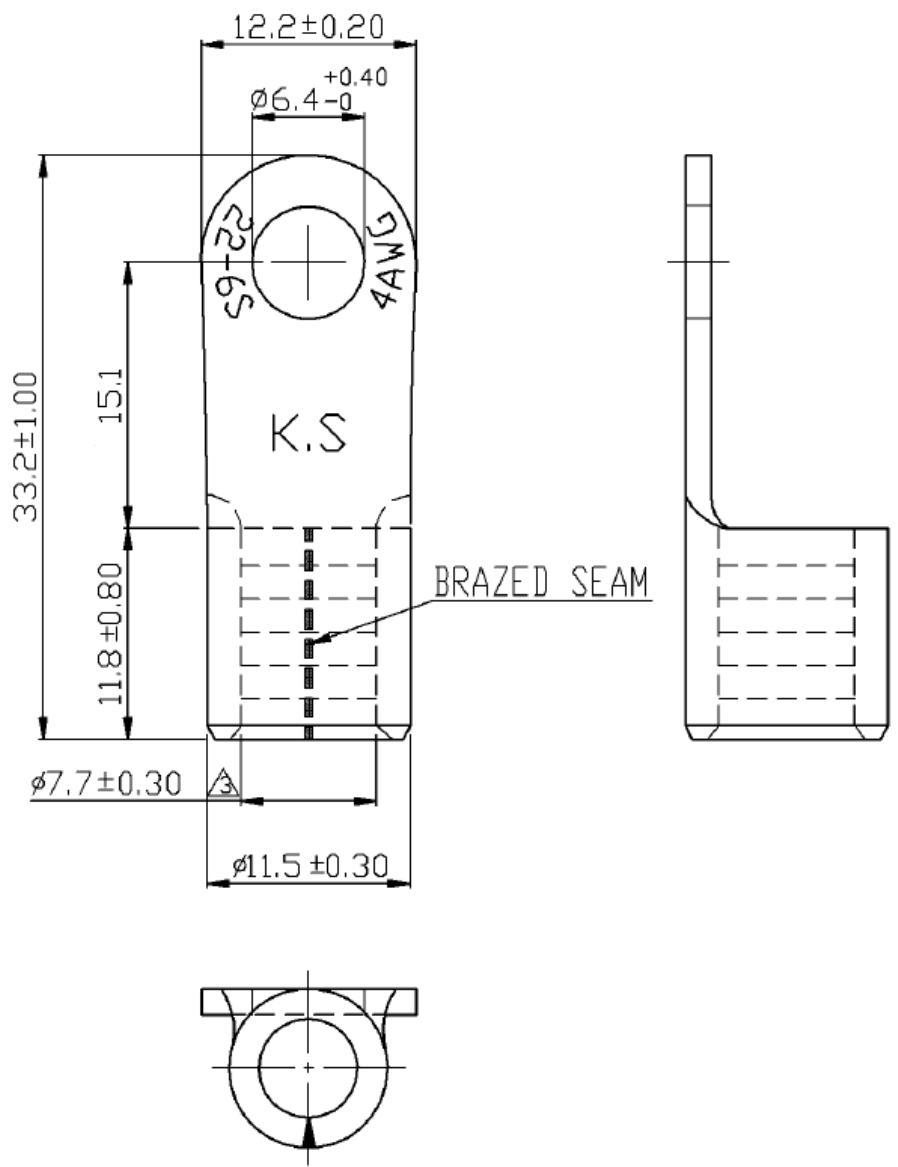


REVISIONS					REV	ZONE	ECO#	DESCRIPTION	DRAW	APPD	DATE
					A			INITIAL RELEASE	KC	-	



- NOTES:**
1. MAXIMUM ELECTRIC CURRENT: AWG 4: 125A
  2. WIRE RANGE: 4 AWG (22 mm<sup>2</sup>)
  3. SURFACE TREATMENT: TIN PLATED
  4. THICKNESS: 1.70 mm

NOTE: CAD GENERATED DRAWING DO NOT UPDATE MANUALLY.

PART NUMBER		PART NUMBER		PART NUMBER	
4 AWG RING TERM, NON-INSULATED		IPACC-R-NBS22-6		SURE-SEAL	
UNLESS OTHERWISE SPECIFIED, DIMENSIONS ARE IN MM		TOLERANCE EXCEPT AS NOTED:		2180 Hornig Road, Philadelphia, PA 19116	
Ø 14 mm 10.20 18-30mm 10.40		Ø 12.2mm 10.30 30-75mm 10.50		NOTICE OF CONFIDENTIALITY	
THIS DRAWING IS THE PROPERTY OF PEI-GENESIS. ALL RIGHTS RESERVED. REPRODUCTION BY ANY MEANS OR DISTRIBUTION TO THIRD PARTIES IS STRICTLY PROHIBITED WITHOUT THE WRITTEN PERMISSION OF AN AUTHORIZED AGENT OF PEI-GENESIS.		DATE		DATE	
DATE CODE: 2A589		4/3/2020		4/3/2020	
THIRD ANGLE PROJECTION		DRAW		DATE	
SIZE A		SCALE NTS		REV A	
SHEET 1 OF 1		KC		-	
SHEET 1 OF 1		DATE		REV	
SHEET 1 OF 1		4/3/2020		A	
SHEET 1 OF 1		DATE		REV	
SHEET 1 OF 1		4/3/2020		A	
SHEET 1 OF 1		DATE		REV	
SHEET 1 OF 1		4/3/2020		A	