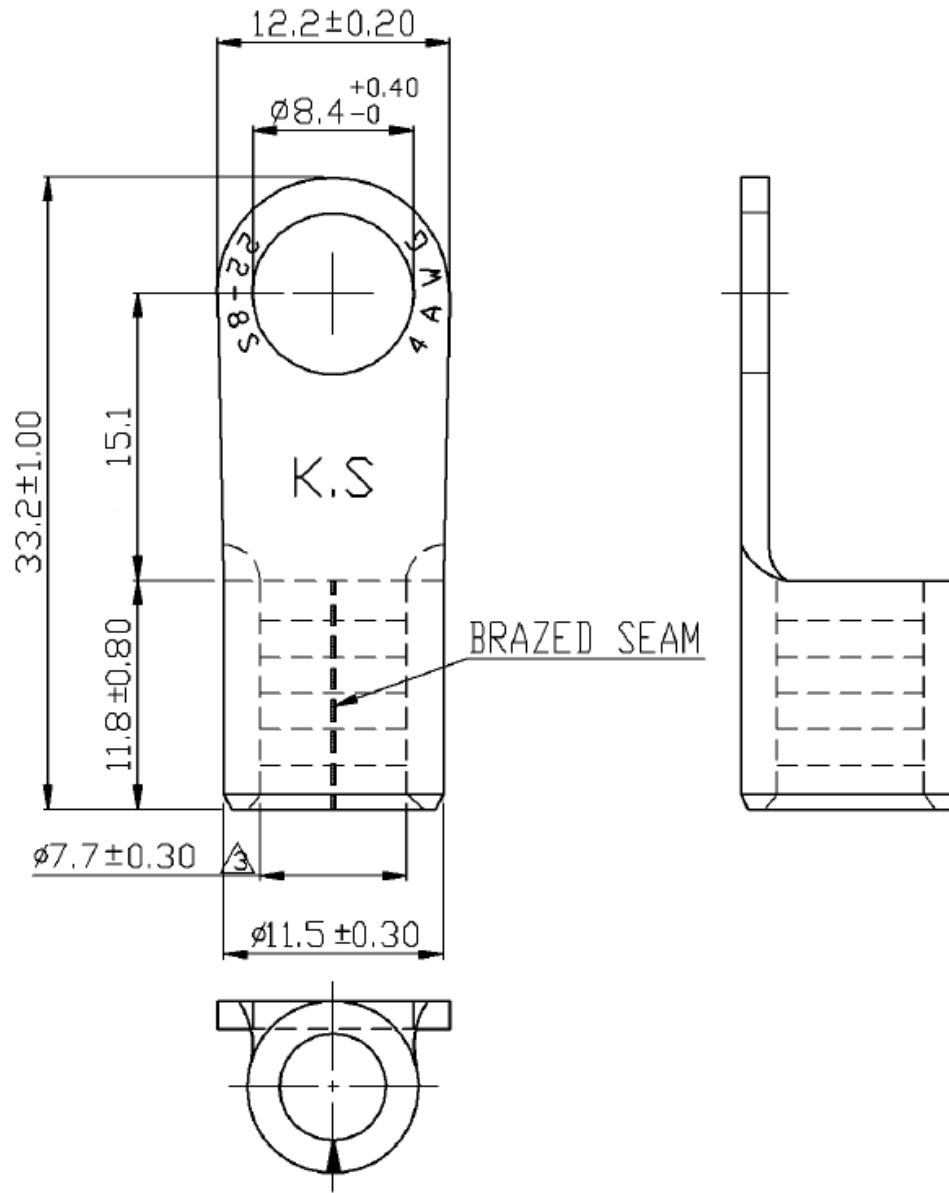


REVISIONS				REV	ZONE	ECO#	DESCRIPTION	DRAW	APPD	DATE
				A			INITIAL RELEASE	KC	-	



**NOTES:**

1. MAXIMUM ELECTRIC CURRENT: AWG 4: 125A
2. WIRE RANGE: 4 AWG (22 mm<sup>2</sup>)
3. SURFACE TREATMENT: TIN PLATED
4. THICKNESS: 1.70 mm

NOTE: CAD GENERATED DRAWING DO NOT UPDATE MANUALLY.

PART NUMBER		DATE		REV	
4 AWG RING TERM, NON-INSULATED		4/3/2020		A	
IPACC-R-NBS22-8					
UNLESS OTHERWISE SPECIFIED, DIMENSIONS ARE IN MM					
TOLERANCE EXCEPT AS NOTED:					
Ø 14 mm 10.20 18-30mm 10.40					
Ø 24mm 10.30 30-75mm 10.50					
THIRD ANGLE PROJECTION					
DATE CODE: 2A589					
SIZE: A	SCALE: NTS	SHEET 1 OF 1		DRAW: KC APPD: - DATE: 4/3/2020 REV: A	
©COPYRIGHT 2018 PEI-GENESIS ENGINEERING PRODUCT DEVELOPMENT					
SURE-SEAL		2180 Hornig Road, Philadelphia, PA 19116		NOTICE OF CONFIDENTIALITY: THIS DRAWING IS THE PROPERTY OF PEI-GENESIS. ALL RIGHTS RESERVED. REPRODUCTION BY ANY MEANS OR DISTRIBUTION TO THIRD PARTIES IS STRICTLY PROHIBITED WITHOUT THE WRITTEN PERMISSION OF AN AUTHORIZED AGENT OF PEI-GENESIS.	